



THE PRESENCE OF COLOR

SPRING2019

by THEERAPON ANGSUPANICH

This collection is inspired by the LGBT community including the history of oppression and segregation to the symbols that are now sources of pride.

Our eyes can only detect a small fraction the electromagnetic radiation that exists in the universe. Mankind has evolved to be able to see the most abundant wavelengths: to us these are the colors. From red to violet, our eye turns wavelengths into a color for our brain to process and use in image construction. When all of the wavelengths of color combine, we see white. White light is a result of all the colors of light. When you see white, do not think of the absence of color, but think of the presence of color. White light can be split into its corresponding colors again using a lens.

Using this lens shows us that white light is actually quite full of colors.

A physical lens can help one understand light and color, but a metaphorical historical and social lens can help us understand the world around us. Taking a moment to look through our metaphorical lens, one can look at society- Shaped by rules and ideas. Where did those rules and ideas originate? The people who could convince other people were the ones who created the rules. The remnants of those convincing humans who wandered this hopeless earth decades ago established the rules, propagated ideas, and set the norms. And if you disagree, you are a traitor or heretic. So here is to understanding the past, altering the norms, and filling this world full of color.



LOVE WIN





croquis Development

Fabric Manipulation



Edge Me

BDSM is a variety of often erotic practices or roleplaying involving bondage, discipline, dominance and submission, sadomasochism, and other related interpersonal dynamics. Given the wide range of practices, some of which may be engaged in by people who do not consider themselves as practising BDSM, inclusion in the BDSM community or subculture is usually dependent upon self-identification and shared experience.





November 27th's Bullet

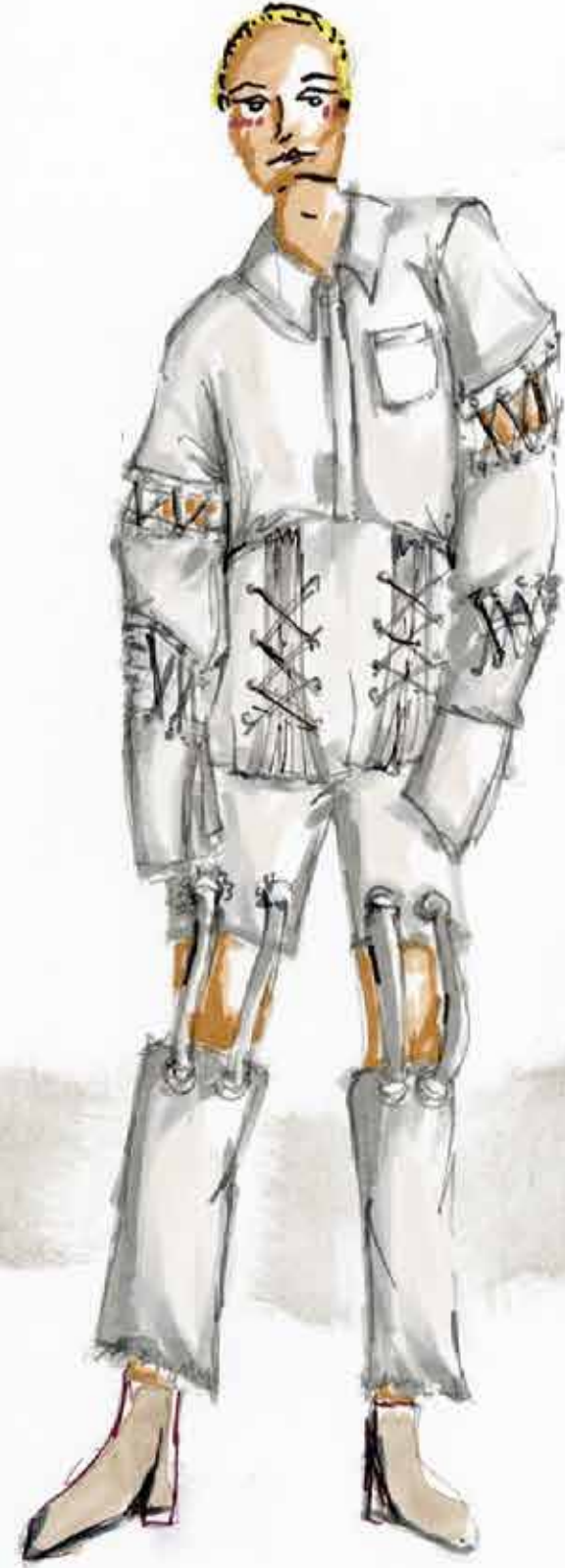
White proceeded to his former office, and intercepted Harvey Milk on the way, asking him to step inside for a moment. Milk agreed to join him. Once the door to the office was closed, White positioned himself between the doorway and Milk, pulled out his revolver and opened fire on Milk. The first bullet hit Milk's right wrist as he tried to protect himself. White continued firing rapidly, hitting Milk twice more in the chest, then fired a fourth bullet at Milk's head, killing him, followed by a fifth shot into his skull at close range.



The Pink Triangle

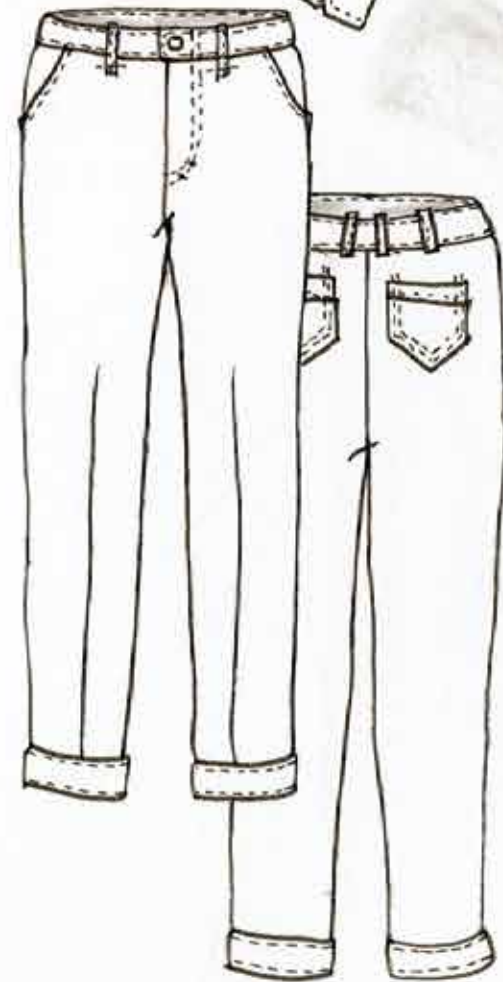
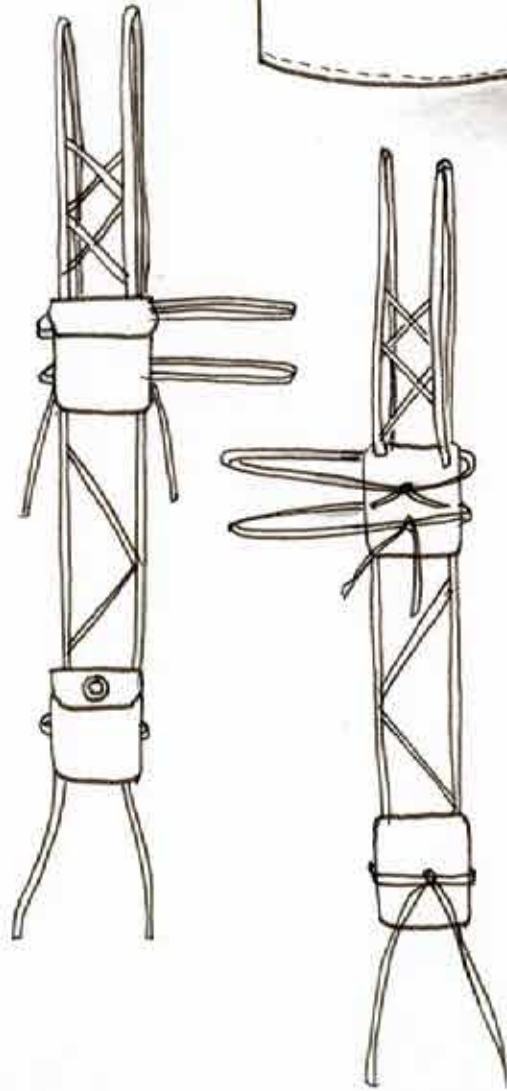
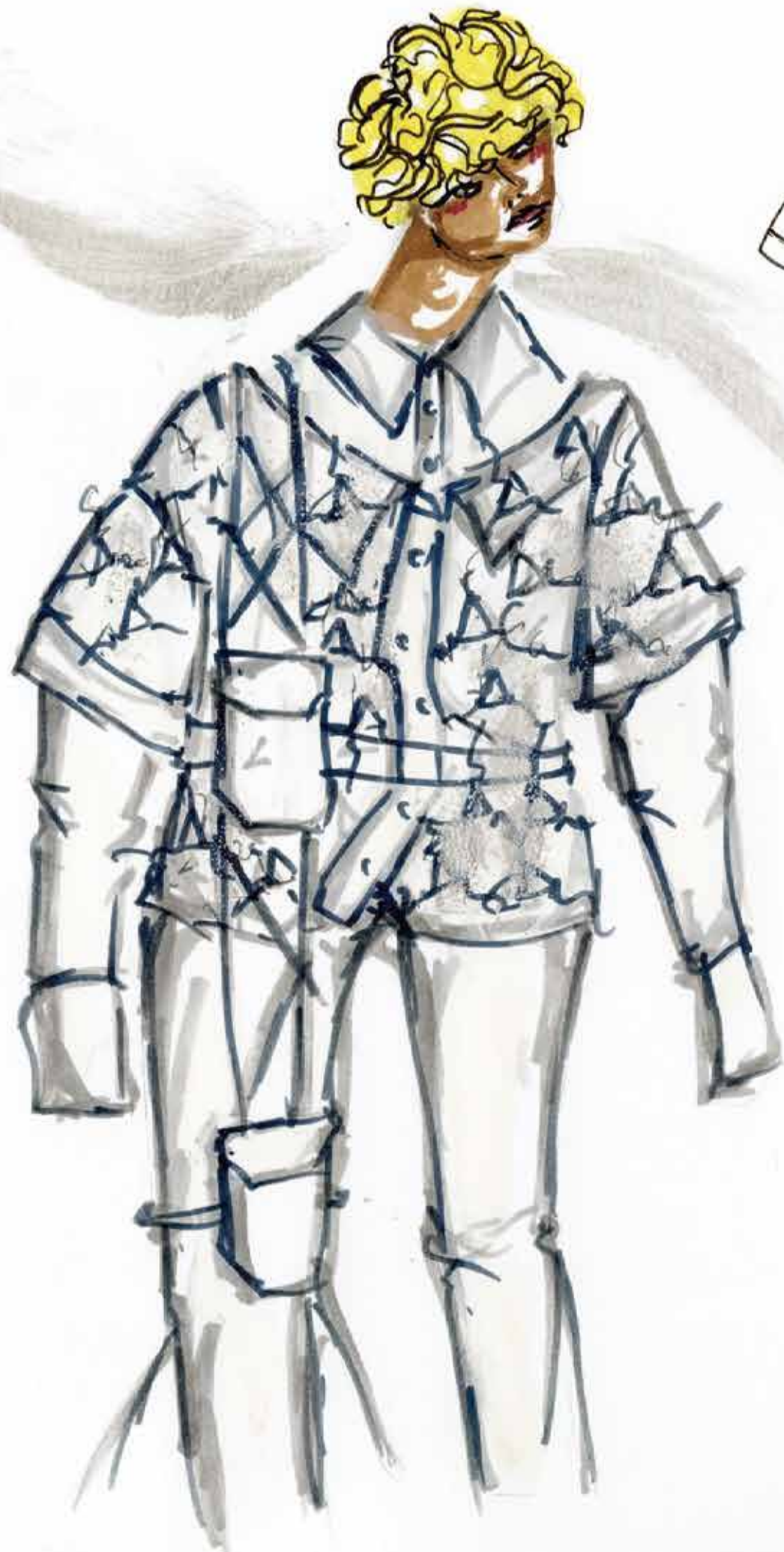
A pink triangle has been a symbol for various LGBT identities, initially intended as a badge of shame, but later reclaimed as a positive symbol of self-identity. In Nazi Germany in the 1930s and 1940s, it began as one of the Nazi concentration camp badges, distinguishing those imprisoned because they had been identified by authorities as homosexual men, a category that also included bisexual men and transgender women. In the 1970s, it was revived as a symbol of protest against homophobia, and has since been adopted by the larger LGBT community as a popular symbol of LGBT pride and the LGBT rights movement.

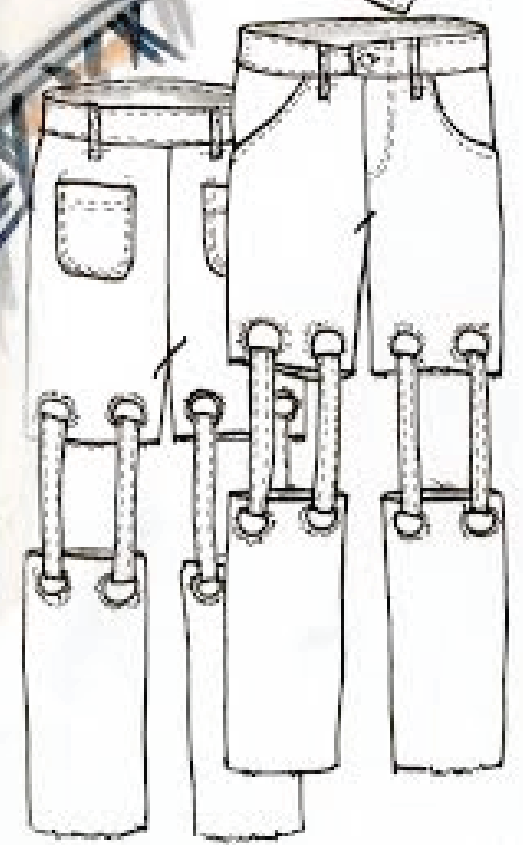
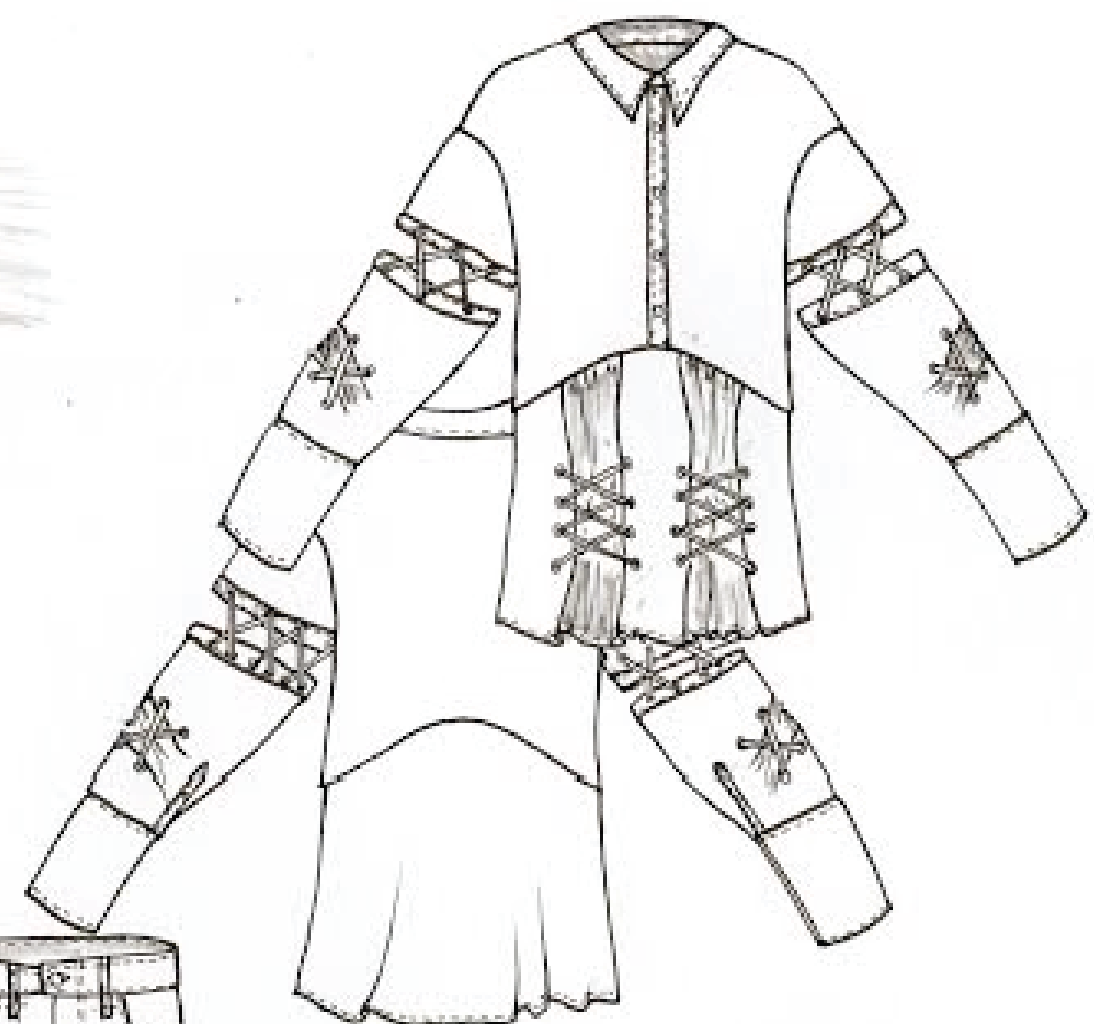
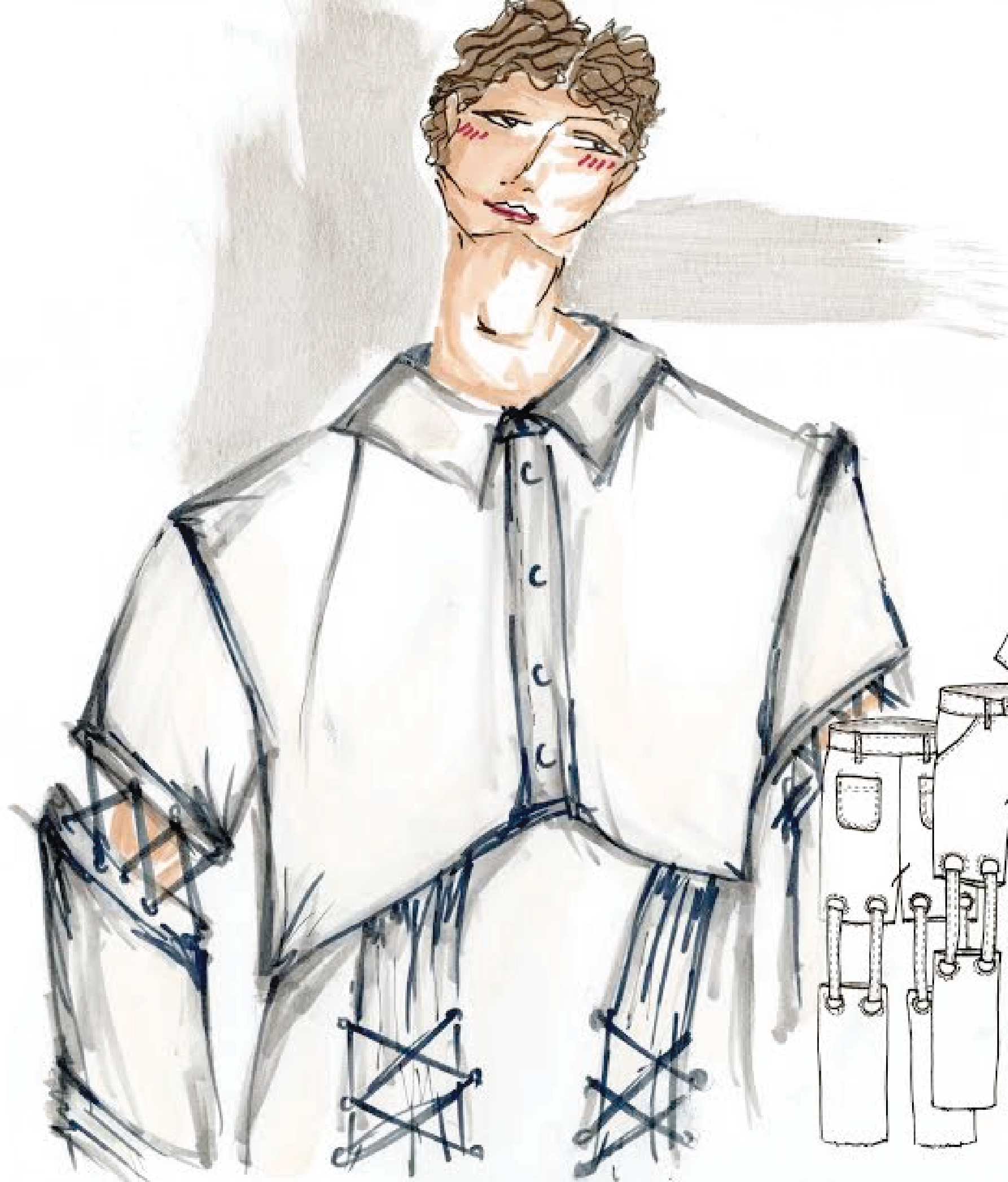


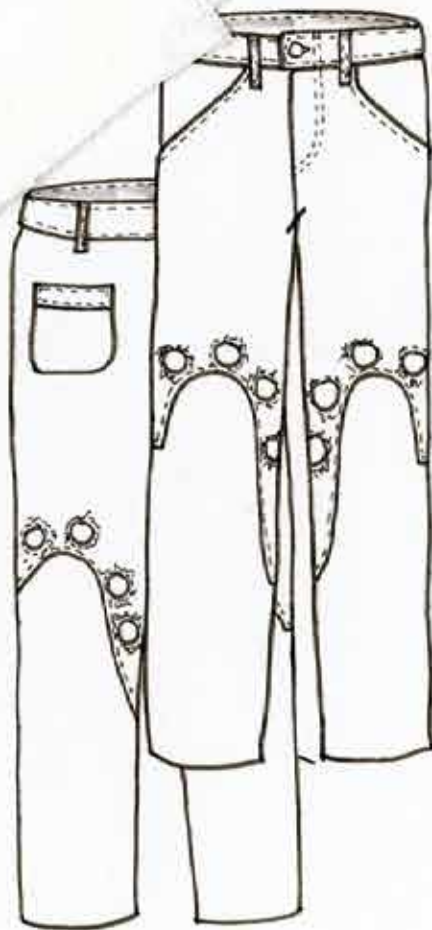
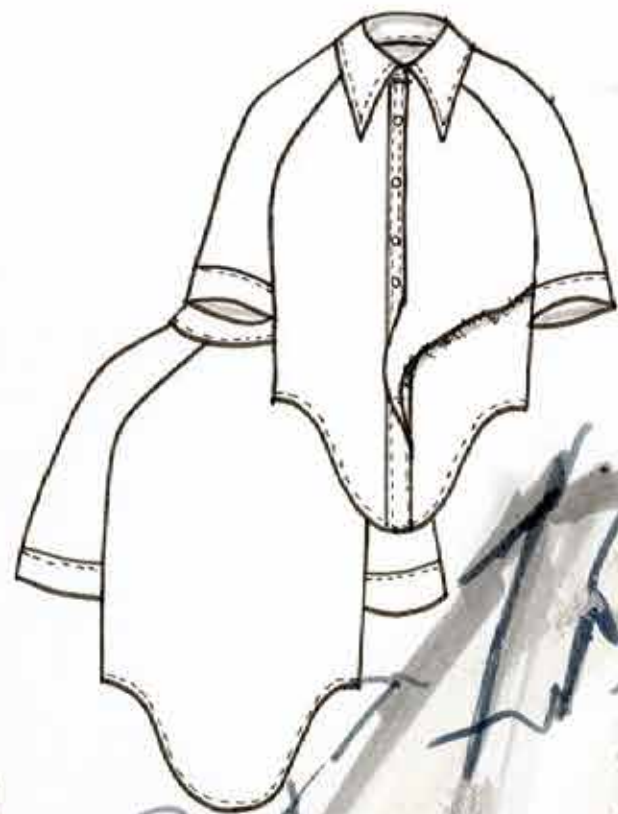
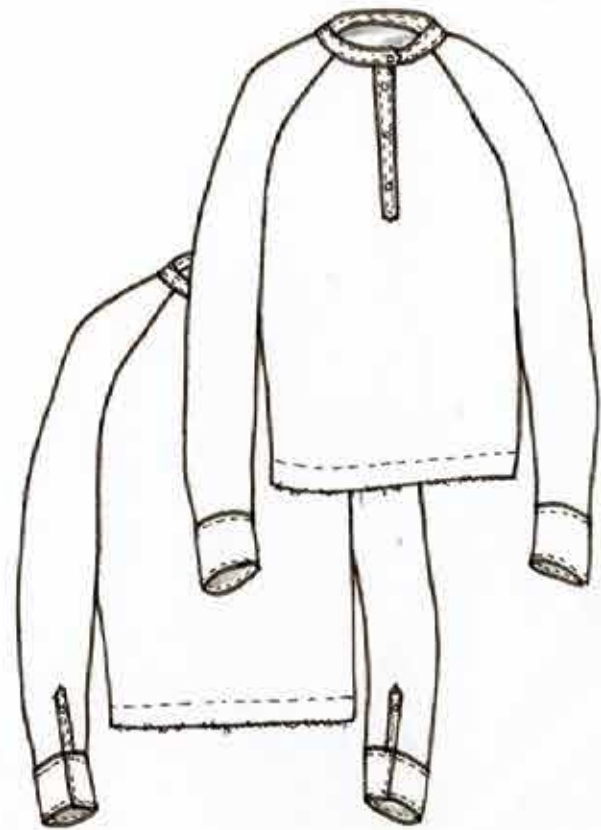


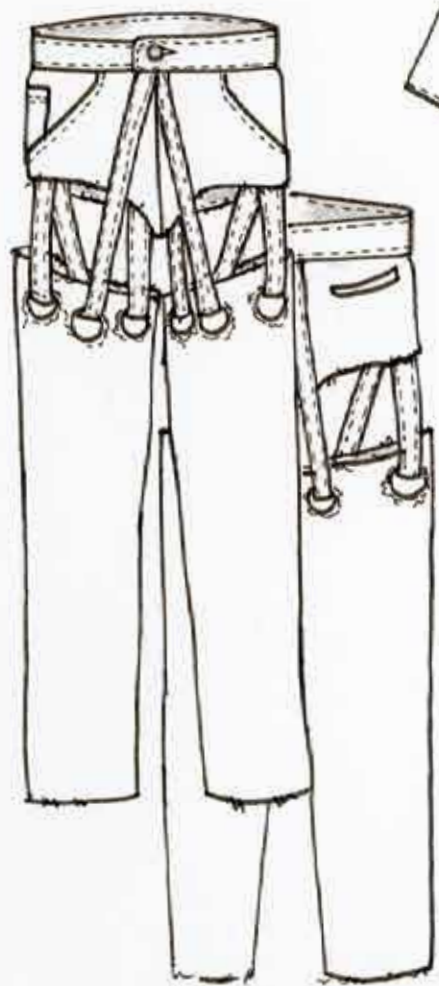
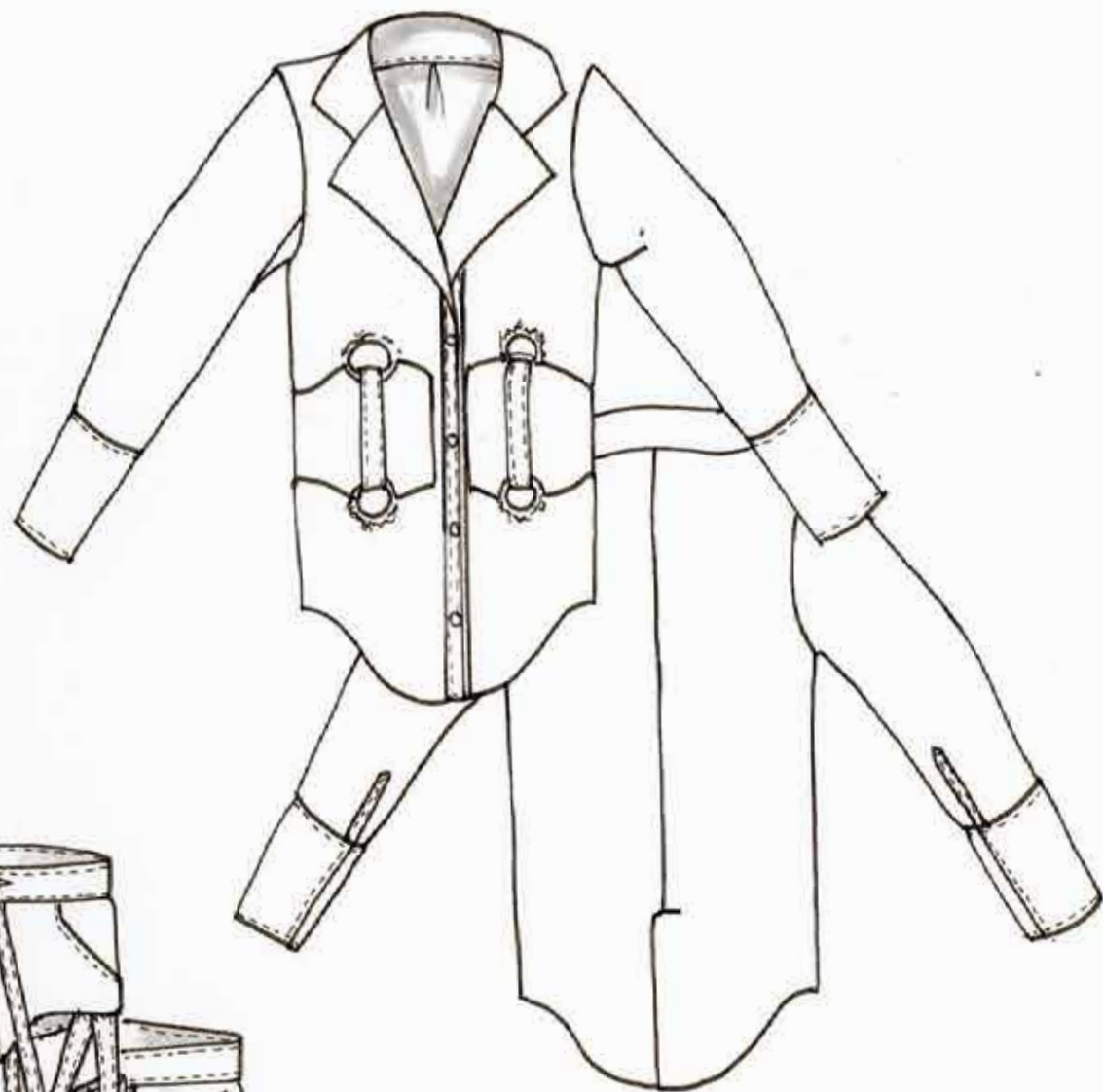


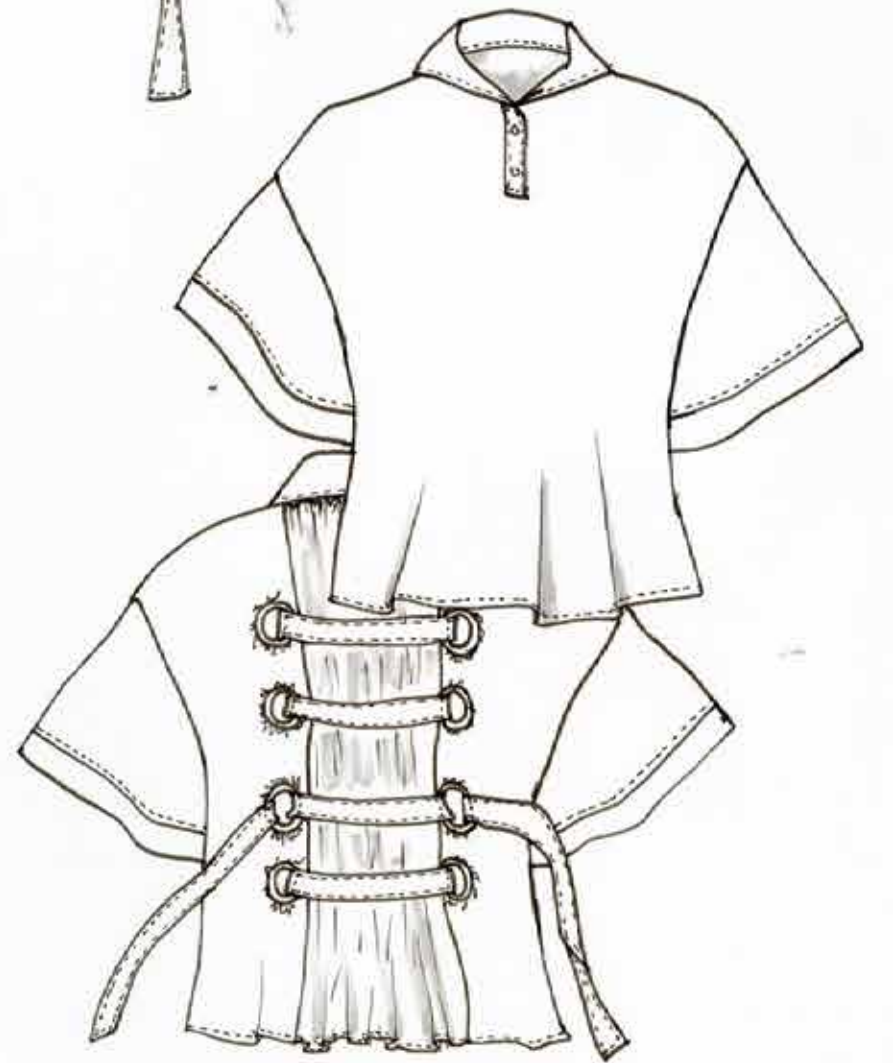
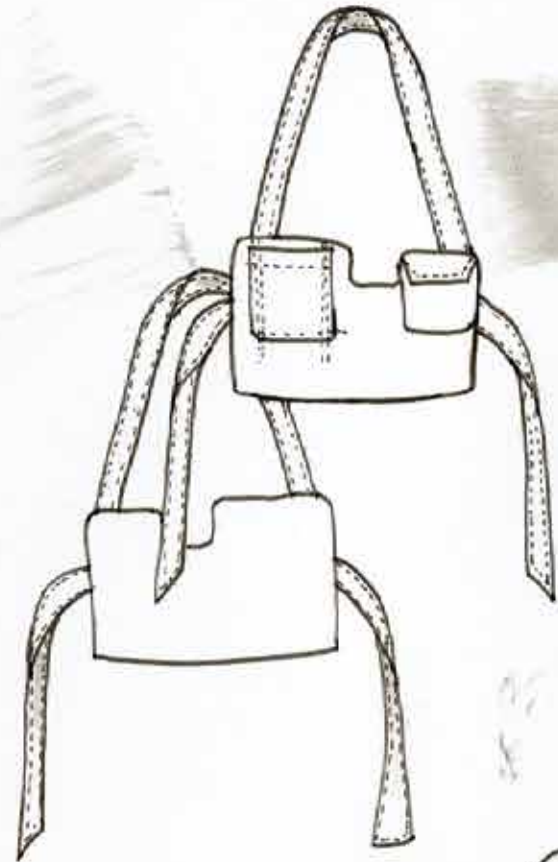
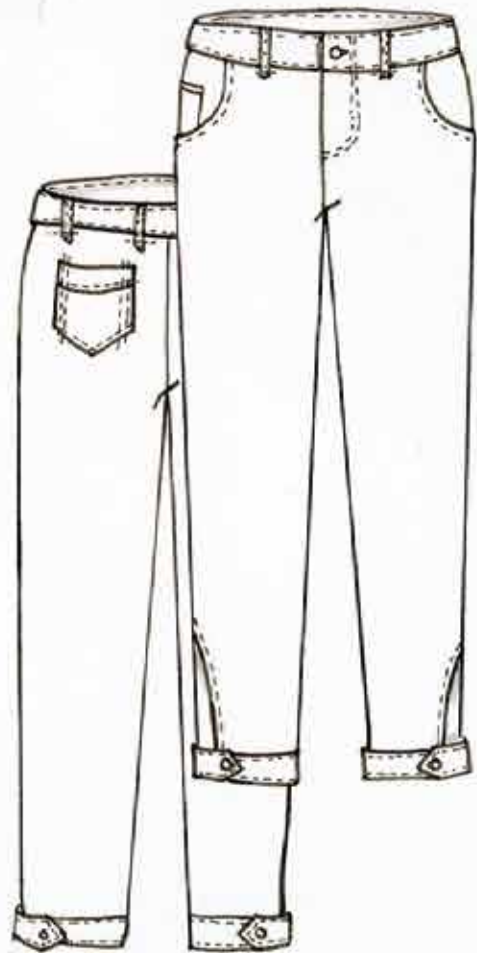


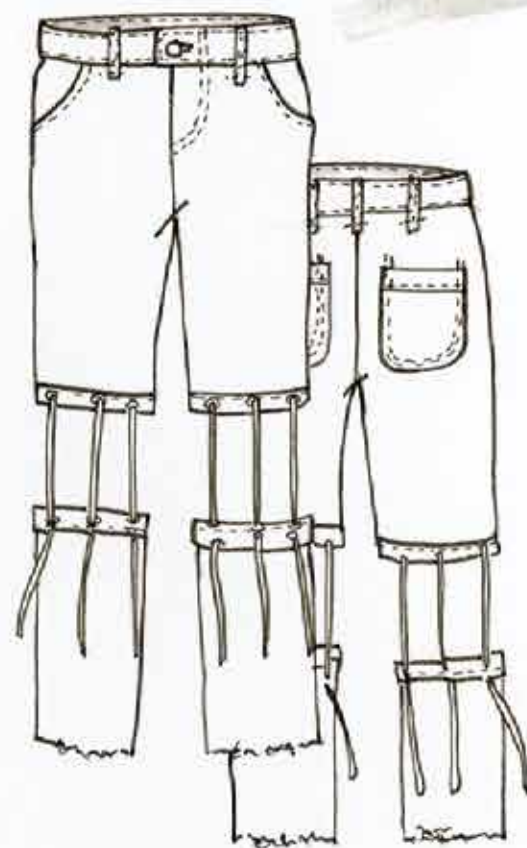


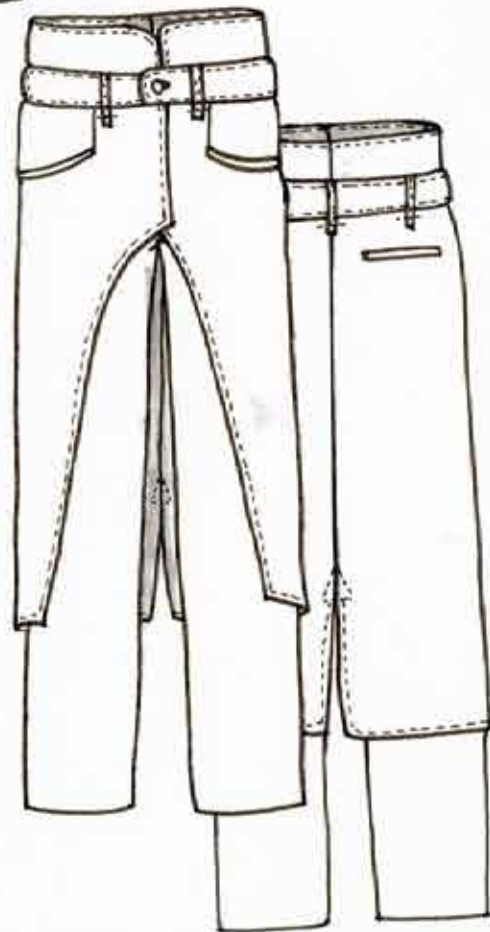
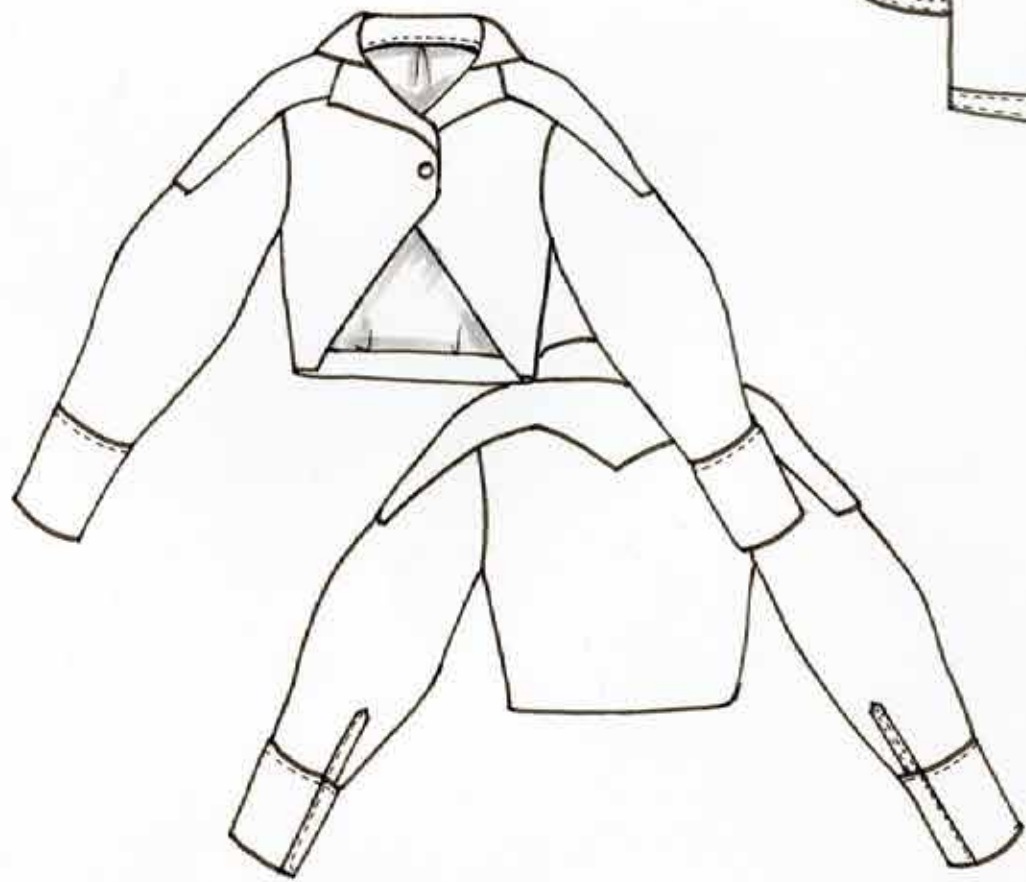


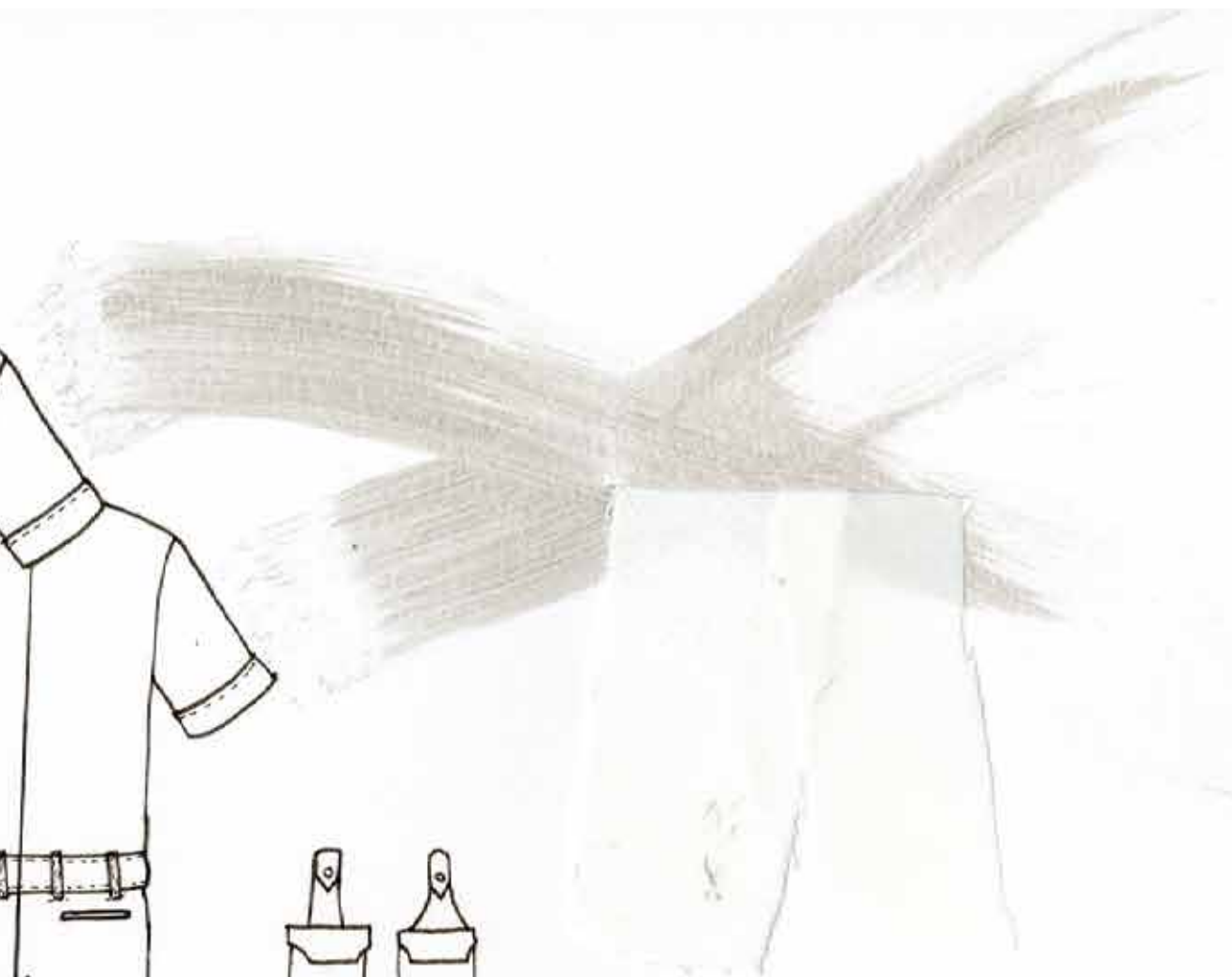
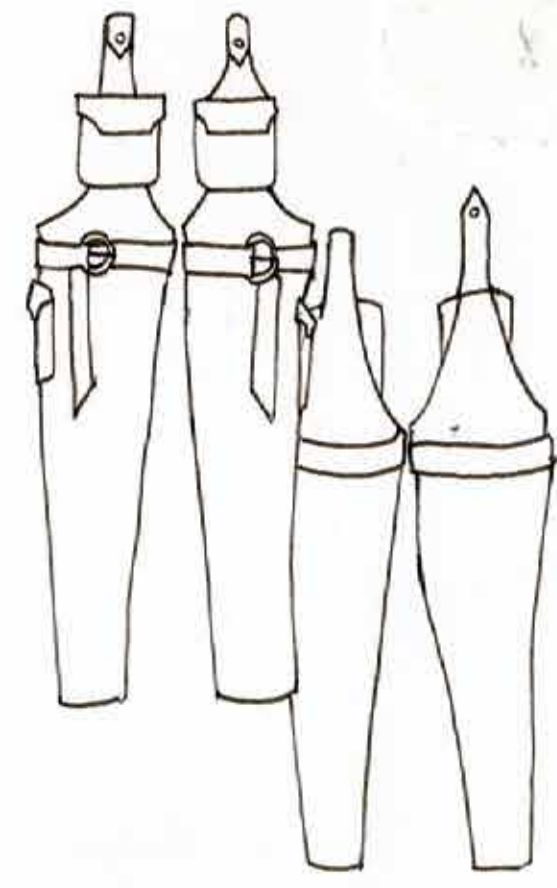
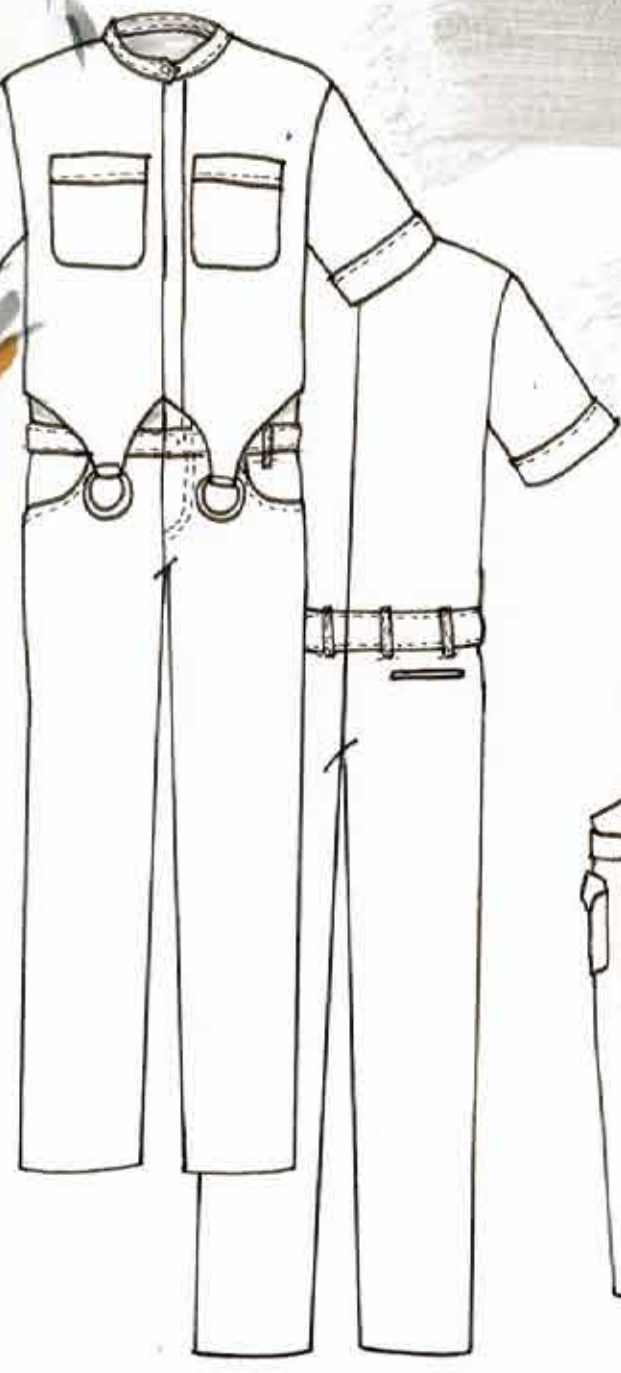














Designer : Theerapon Angsupanich
Photogarpther : Voraton Siriyakul
Stylish : Ashlei Martinez
Hair & make up Artist : Lin peggy
Model : Shawn Shahan
: Jack Clarson



Designer : Theerapon Angsupanich
Photographer : Voraton Siriyakul
Stylish : Ashlei Martinez
Hair & make up Artist : Lin peggy
Model : Shawn Shahan
: Jack Clarson





Designer : Theerapon Angsupanich
Photogarpheer : Voraton Siriyakul
Stylish : Ashlei Martinez
Hair & make up Artist : Lin peggy
Model : Shawn Shahan
: Jack Clarson

