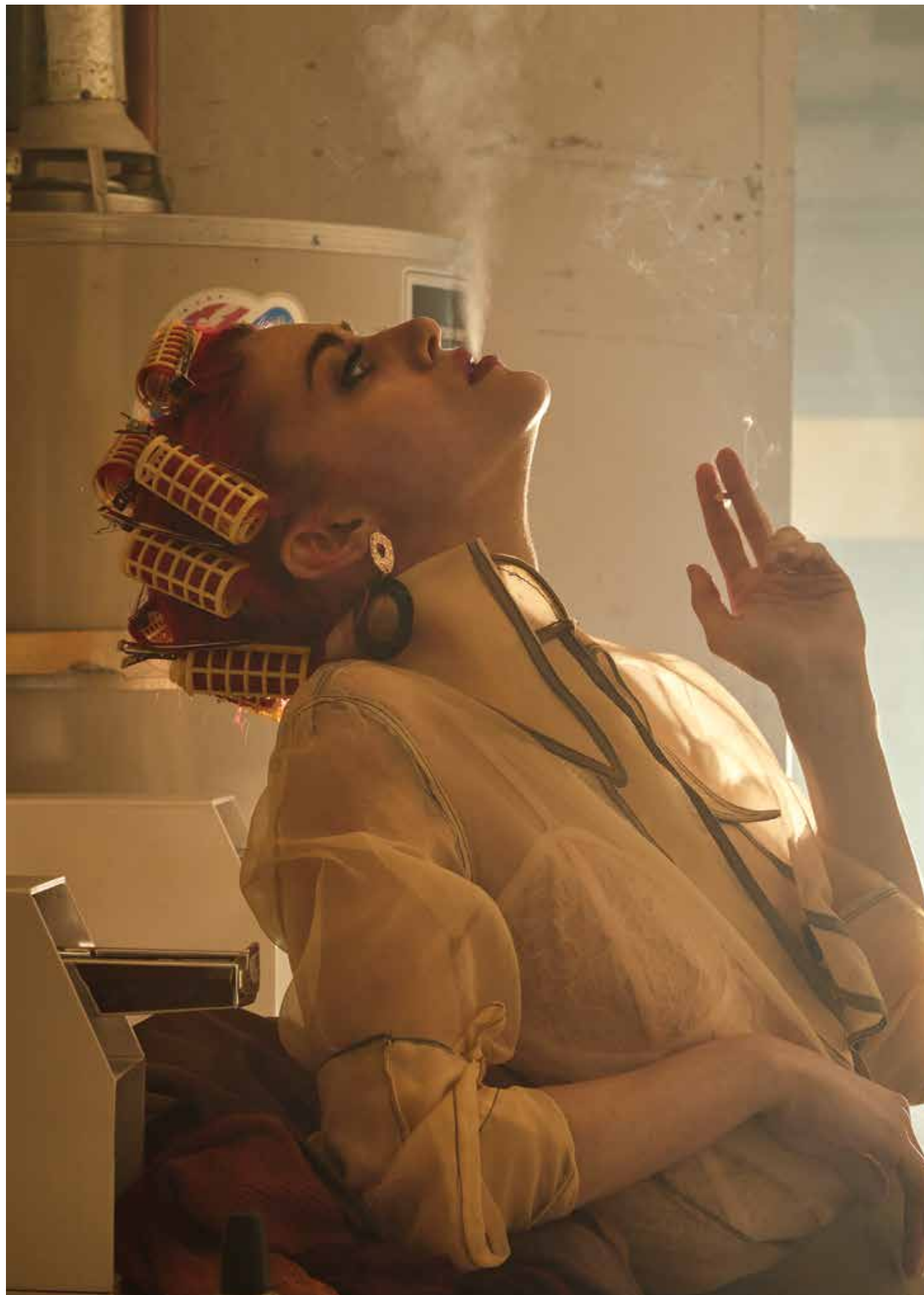


Theerapon Angsupanich
3D Design Projects



Designer Shirt
&
High waist Skirt Project
from 3D design Class/Fall2018

Designer : Theerapon Angsupanich
Photographer : Voraton Siriyakul
Hair & Make up : Wijitra Bunjung
Model : Jacklyn Shahan



WASHER AND DRYER OPERATING INSTRUCTIONS
We appreciate your patronage and to ensure its continuing
Please be patient with the attendant and your laundry.

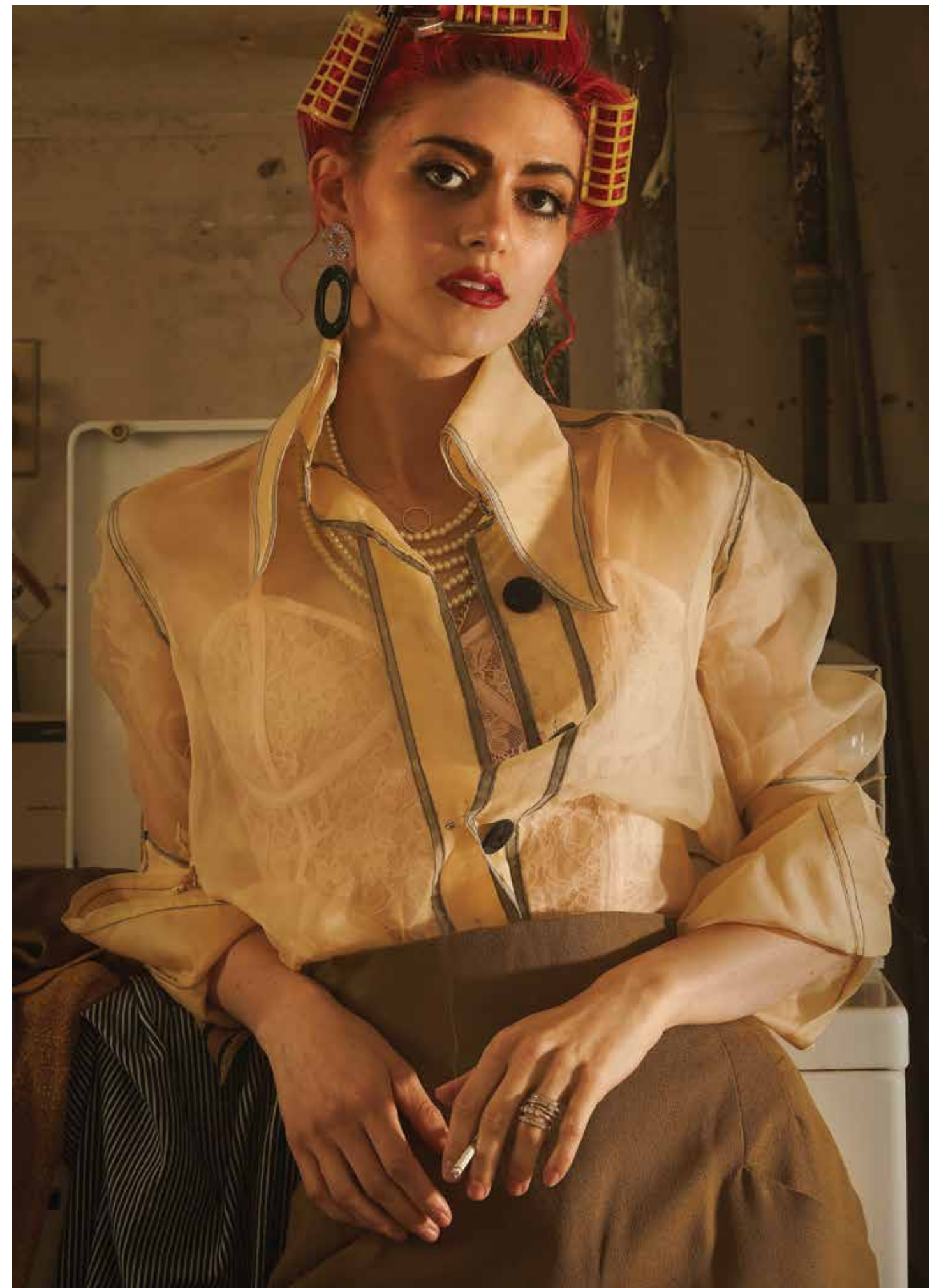
WASHER	DRYER
1. Only wash items listed as washable materials.	1. Do not dry wool, rubber or plastics.
2. Select desired washer control setting.	2. Select desired dryer temperature setting.
3. Load clothes evenly and correctly.	3. Clean lint screen for better drying time.
4. Add detergent. See box instructions.	4. Load clothes so they can tumble freely.
5. To start washer, close lid & front window. (Washer will stop whenever lid is re-opened during cycle.)	5. To start dryer, close door, insert coins, and push start button. (Dryer will stop whenever door is re-opened during cycle.)
6. For best results, remove clothes promptly at end of washer cycle.	6. Remove delicate and permanent press garments when dry to avoid wrinkling.

Washers and Dryers by Web
1-800-824-7386

BRADFORD WHITE
ECOMAGNA
SERIES
PHDD
Built to be the Best

CAUTION
DO NOT TOUCH THE DRYER DRUM OR THE HEATING ELEMENTS. THEY ARE VERY HOT.
DO NOT REPAIR OR SERVICED WITHOUT HELP.
DO NOT OVERLOAD THE DRYER.
DO NOT USE FLAMMABLE LIQUIDS OR GASES IN THE DRYER.
DO NOT USE THE DRYER TO DRY RUBBER, PLASTIC, OR WAXED CLOTHING.
DO NOT USE THE DRYER TO DRY CARPETING, MATS, OR RUGS.
DO NOT USE THE DRYER TO DRY SHIRTS, BLOUSES, OR DRESSES.
DO NOT USE THE DRYER TO DRY CLOTHING WITH METAL PARTS.
DO NOT USE THE DRYER TO DRY CLOTHING WITH EMBROIDERY OR PRINTING.
DO NOT USE THE DRYER TO DRY CLOTHING WITH LACE OR TRIM.
DO NOT USE THE DRYER TO DRY CLOTHING WITH SPANDEX OR ELASTIC.
DO NOT USE THE DRYER TO DRY CLOTHING WITH LEATHER OR SUEDE.
DO NOT USE THE DRYER TO DRY CLOTHING WITH VELVET OR TERRY.
DO NOT USE THE DRYER TO DRY CLOTHING WITH DENIM OR JEANS.
DO NOT USE THE DRYER TO DRY CLOTHING WITH WOOL OR SILK.
DO NOT USE THE DRYER TO DRY CLOTHING WITH RIBBON OR TIE DYE.
DO NOT USE THE DRYER TO DRY CLOTHING WITH BUCKRAM OR INTERFACING.
DO NOT USE THE DRYER TO DRY CLOTHING WITH LINEN OR COTTON LACE.
DO NOT USE THE DRYER TO DRY CLOTHING WITH CLOTHESLINE STRIPS.
DO NOT USE THE DRYER TO DRY CLOTHING WITH CLOTHESLINE STRIPS.
DO NOT USE THE DRYER TO DRY CLOTHING WITH CLOTHESLINE STRIPS.

PLEASE CLEAN THE LINT SCREEN AFTER USE.
请在使用后，拉出纱网清洁里面的尘垢。



Jacket Project

from 3D design Class /Spring2019

Designer : Theerapon Angsupanich
Photographer : Voraton Siriyakul
Hair & Make up : Lin Peggy
Model : Jasmine Becker







Jacket Project

from 3D design Class /Spring2019

Designer : Theerapon Angsupanich

Photographer : Voraton Siriyakul

Hair & Make up : Lin Peggy

Model : Jasmine Becker



Designer Pants Project

from 3D design Class /Spring2019

Designer : Theerapon Angsupanich
Photographer : Voraton Siriyakul
Model : Peirong Li
Location : China Beach
San Francisco, CA





Designer Pants Project

from 3D design Class /Spring2019

Designer : Theerapon Angsupanich
Photographer : Voraton Siriyakul
Model : Peirong Li
Location : China Beach
San Francisco, CA



Designer Coat
Project
from 3D design Class
/Spring2019

Designer : Theerapon Ang-
supanich

Photographer : Voraton Siri-
yakul

Model : Mia Lee

Location : Sprekle lake, Golden
Gate Park
San Francisco, CA





Designer Coat Project Detail

from 3D design Class /Spring2019

Designer : Theerapon Angsupanich

Photographer : Voraton Siriyakul

Model : Mia Lee

Location : Sprekle lake, Golden Gate Park
San Francisco, CA







Designer Coat Project

from 3D design Class /Spring2019

Designer : Theerapon Angsupanich

Photographer : Voraton Siriyakul

Model : Mia Lee

Location : Sprekle lake, Golden Gate Park
San Francisco, CA