

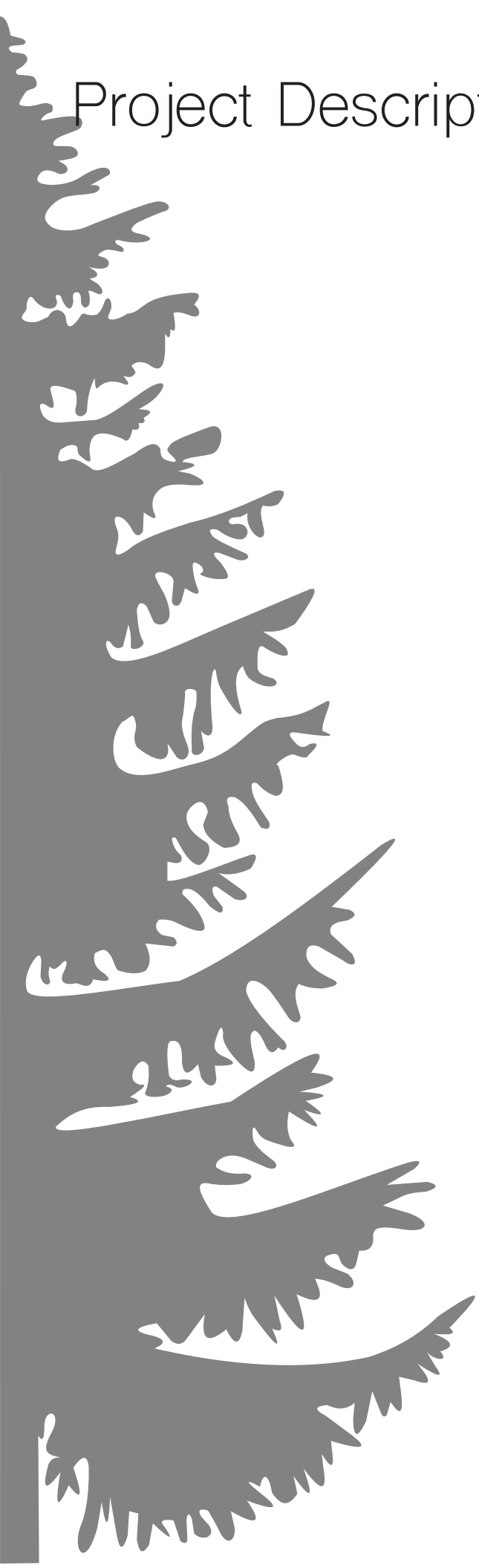


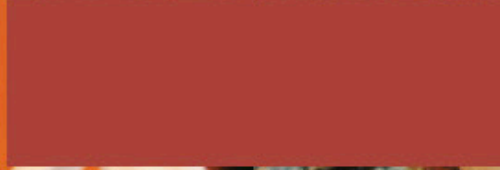
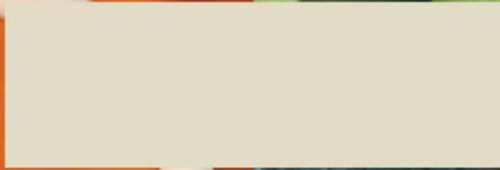
Juniper

An
Activewear Capsule
Collection

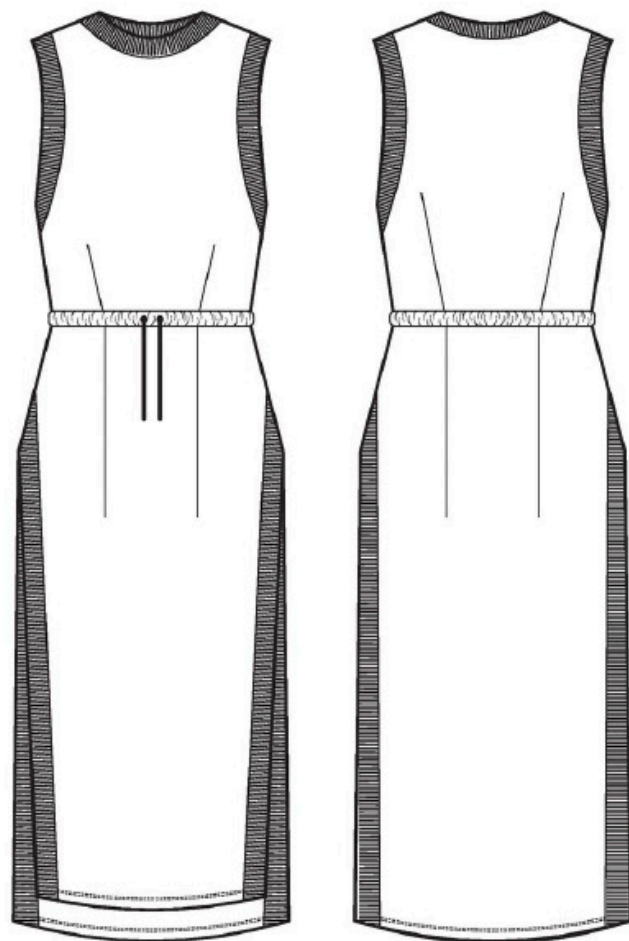
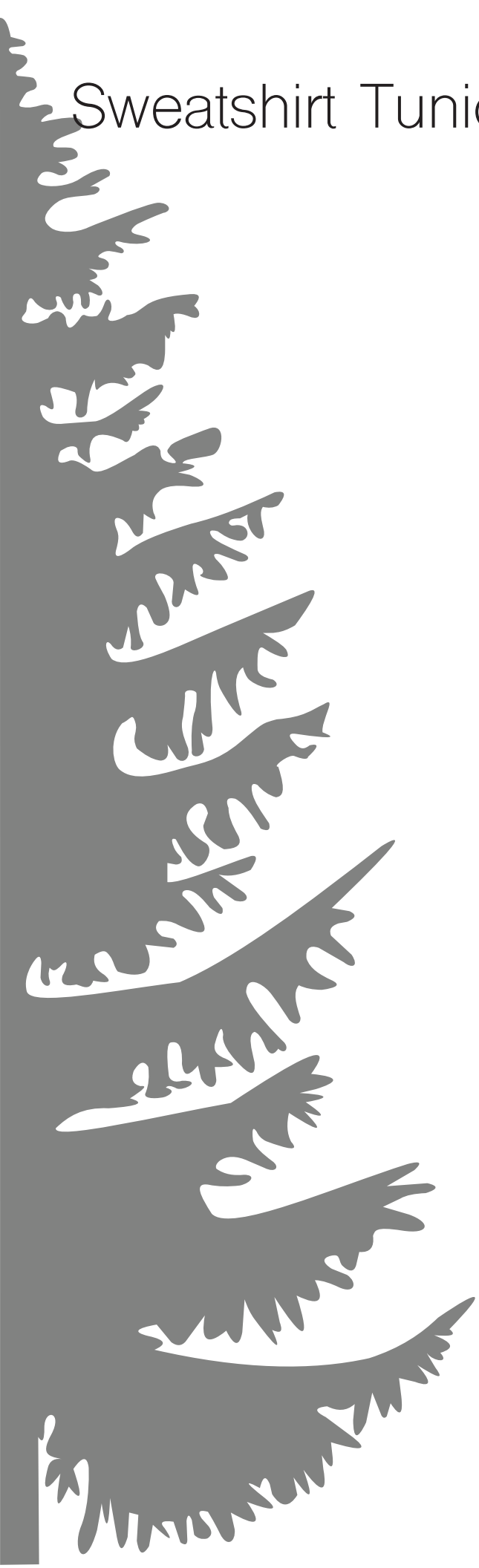
Project Description

Juniper is an activewear capsule collection, designed specifically to be equally functional and stylish. The garments are a mixture of staple items and trendy pieces that can be used as the foundation for a larger seasonal run or as a limited time feature.





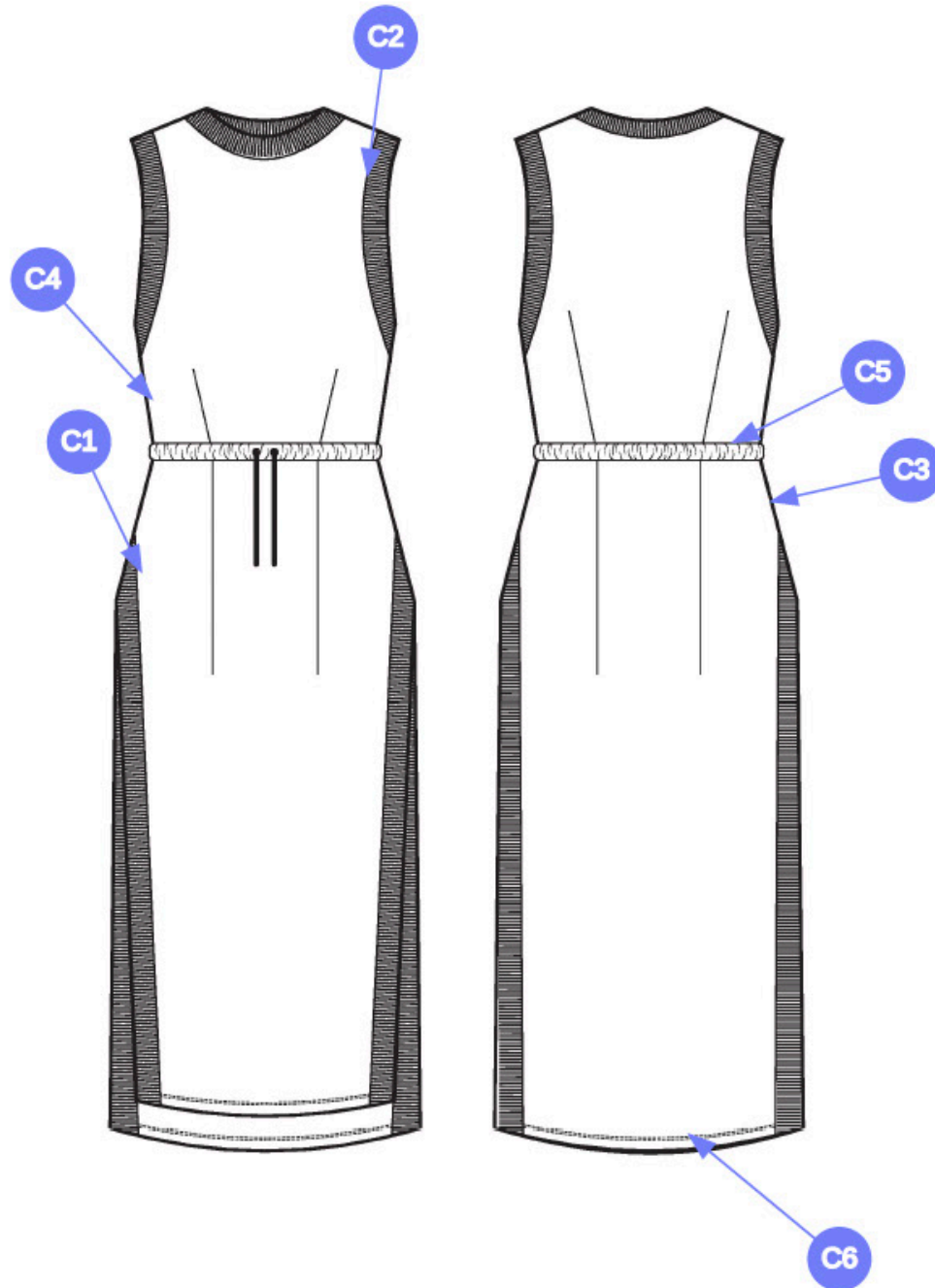
Sweatshirt Tunic Tech Pack



Construction Details

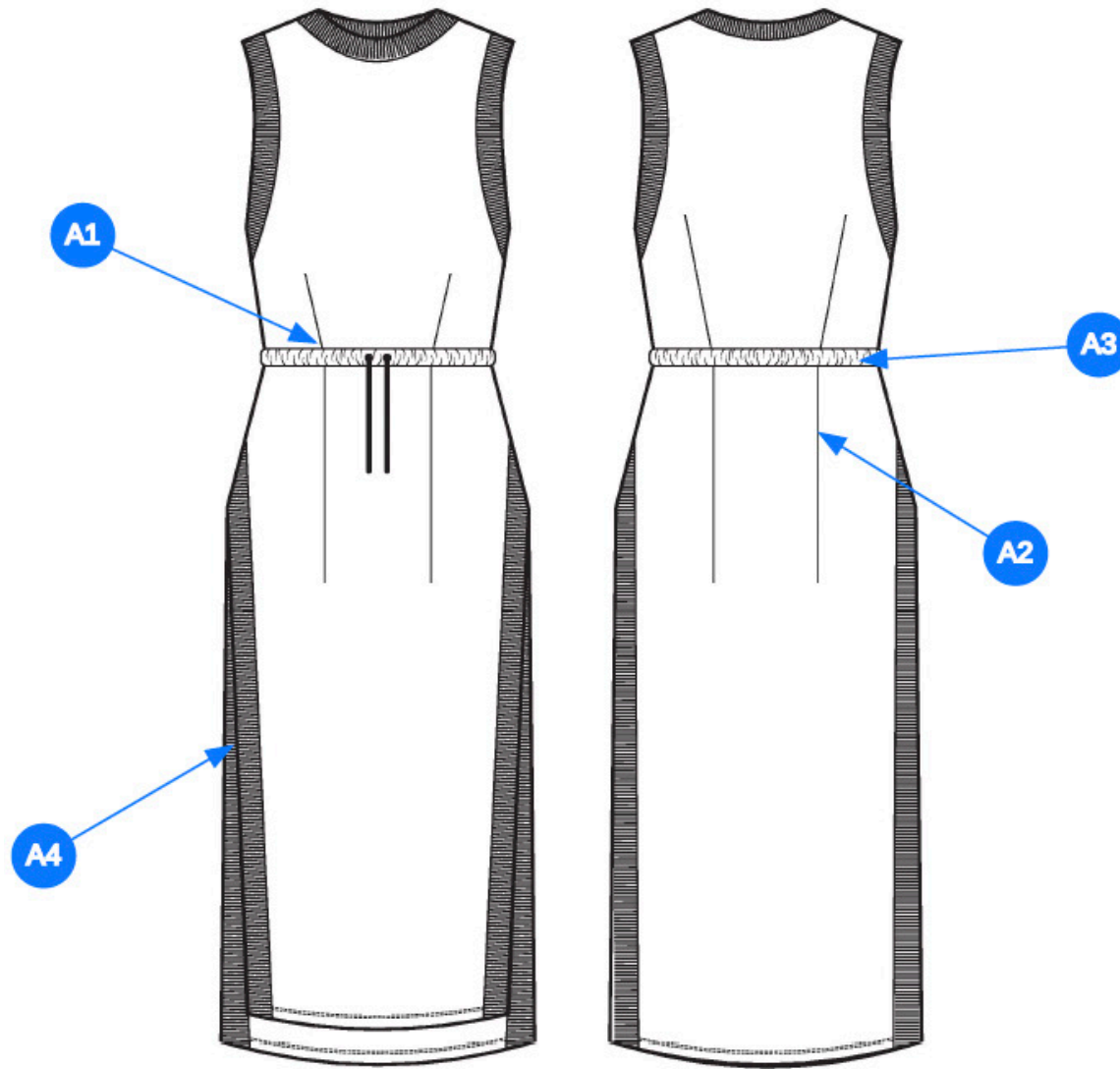
Construction Details (6)

- C1** Superimposed Seam with Single Needle Topstitch
- C2** Flat Seam with Multi-Needle Chain Stitch
- C3** Superimposed Seam with Multi-Needle Chain Stitch
- C4** Superimposed Seam with Multi-Needle Chain Stitch
- C5** Superimposed Seam with Multi-Needle Chain Stitch
- C6** Bendback hem with double needle topstitch



Design Details

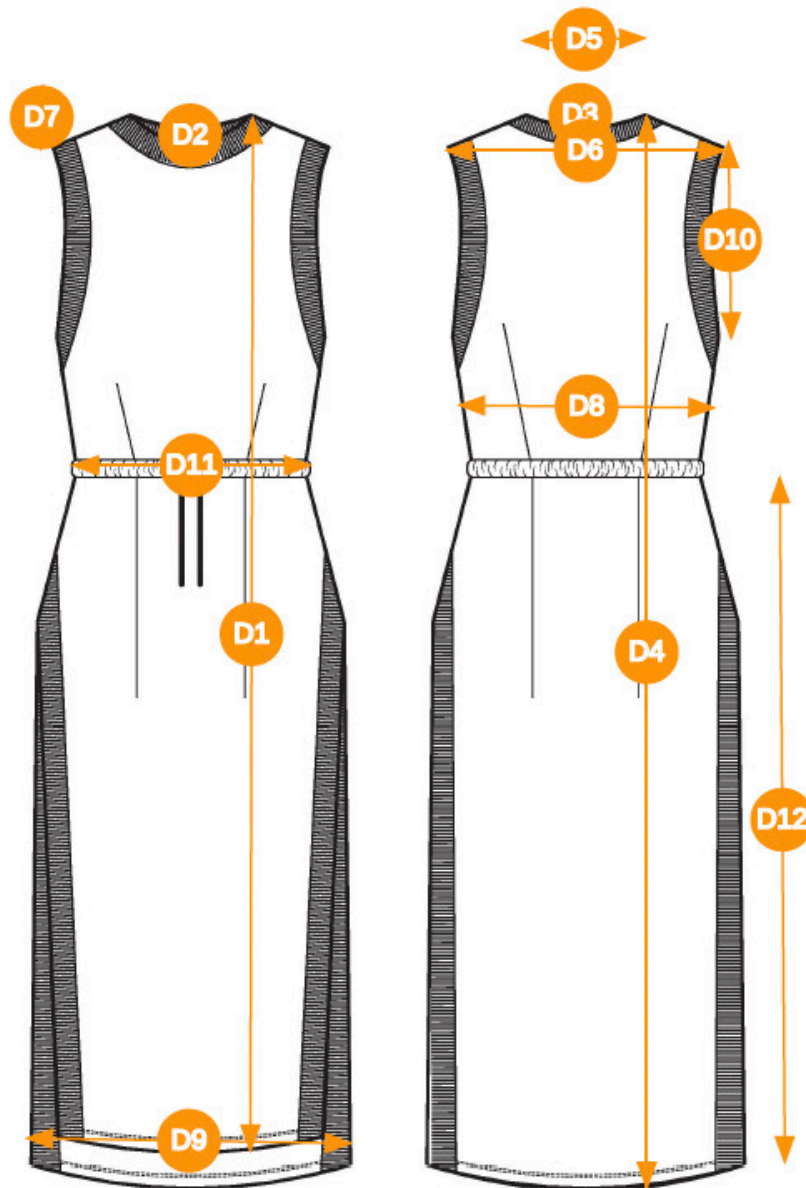
- Comments (4)
- A1 Fish Eye Dart
 - A2 Fisheye Dart
 - A3 Drawstring Casing
 - A4 Side Slits



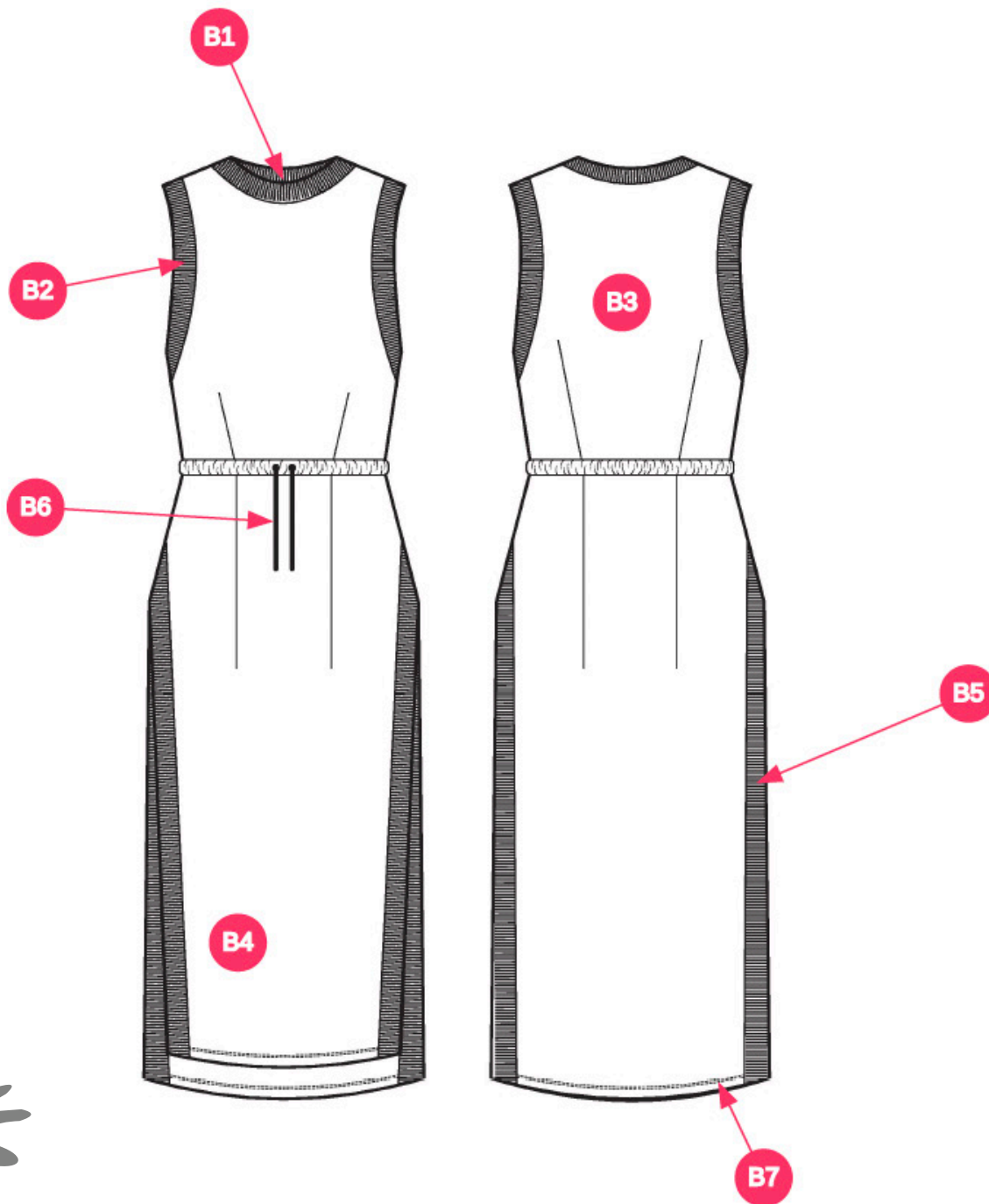
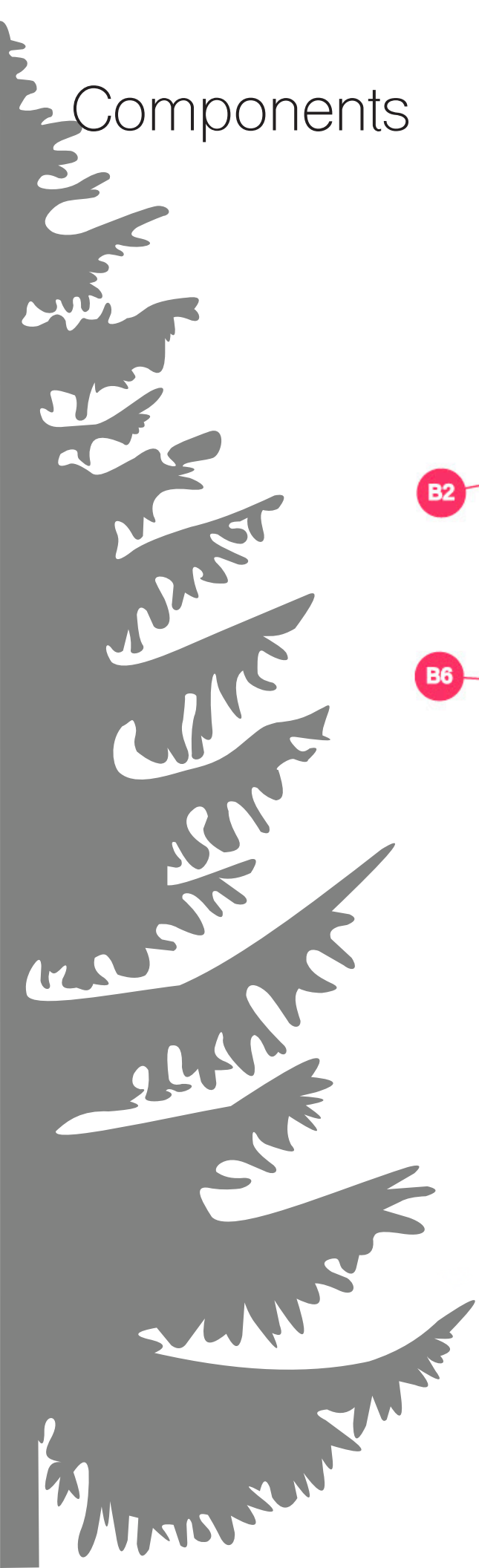
Point of Measure

Points of measure (12)

- D1** Front Length from High Point Shoulder (HPS)
- D2** Front Neck Drop
- D3** Back Neck Drop
- D4** Back Length from HPS
- D5** Neck width
- D6** Across shoulder
- D7** Shoulder Slope
- D8** Chest Circumference
- D9** Sweep Circumference
- D10** Armhole Circumference Curved
- D11** Waist Circumference
- D12** Side Seam Length



Components



Components (7)

- B1** DKeizer Cotton Rib Knit
- B2** DKeizer Cotton Rib Knit
- B3** DKeizer Cotton Jersey Fleece
- B4** DKeizer Cotton Jersey Fleece
- B5** DKeizer Cotton Rib Knit
- B6** DKeizer Natural Italian Drawstring
- B7** DKeizer Cotton Thread

Size Specifications

Sample Size: 6

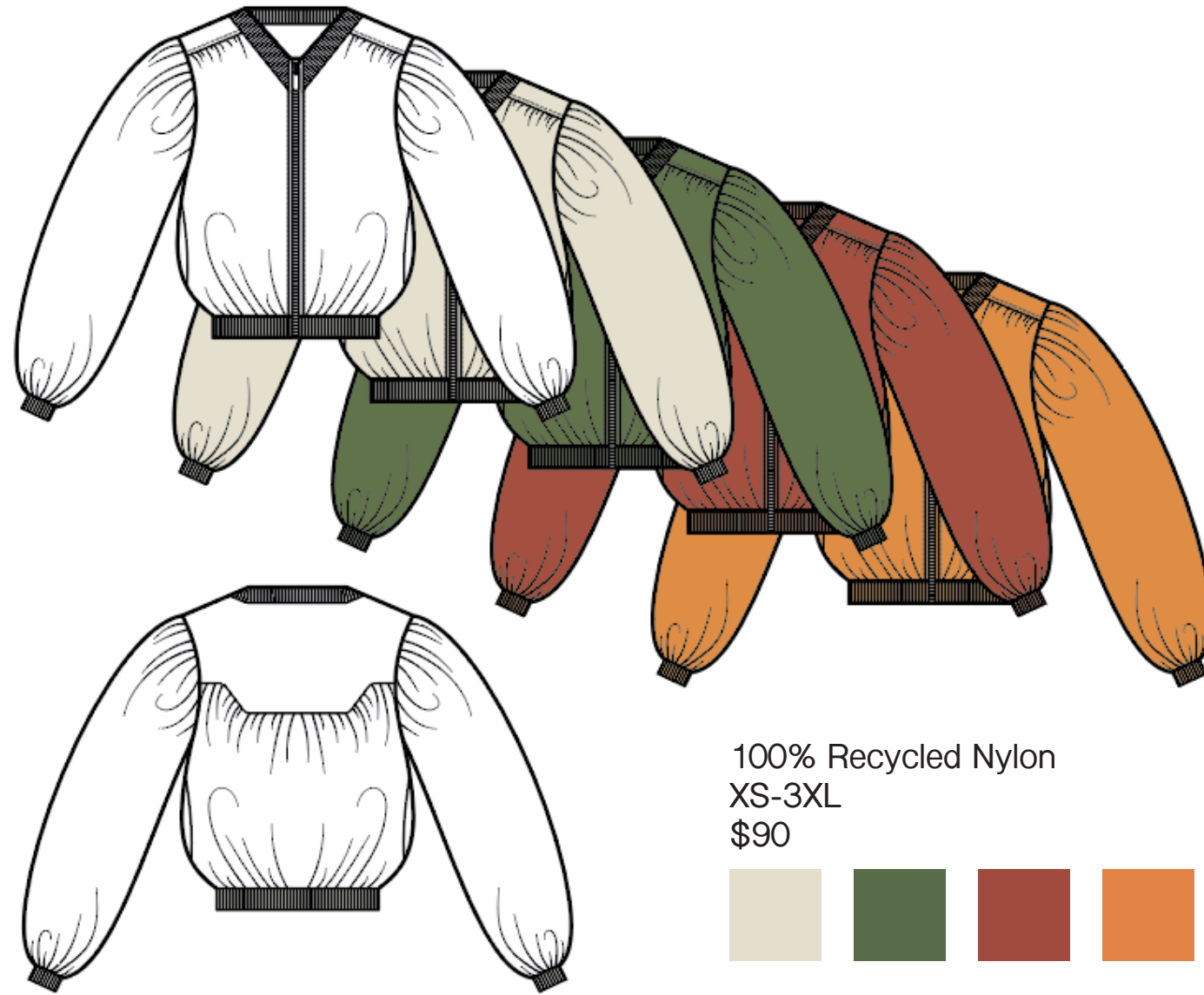
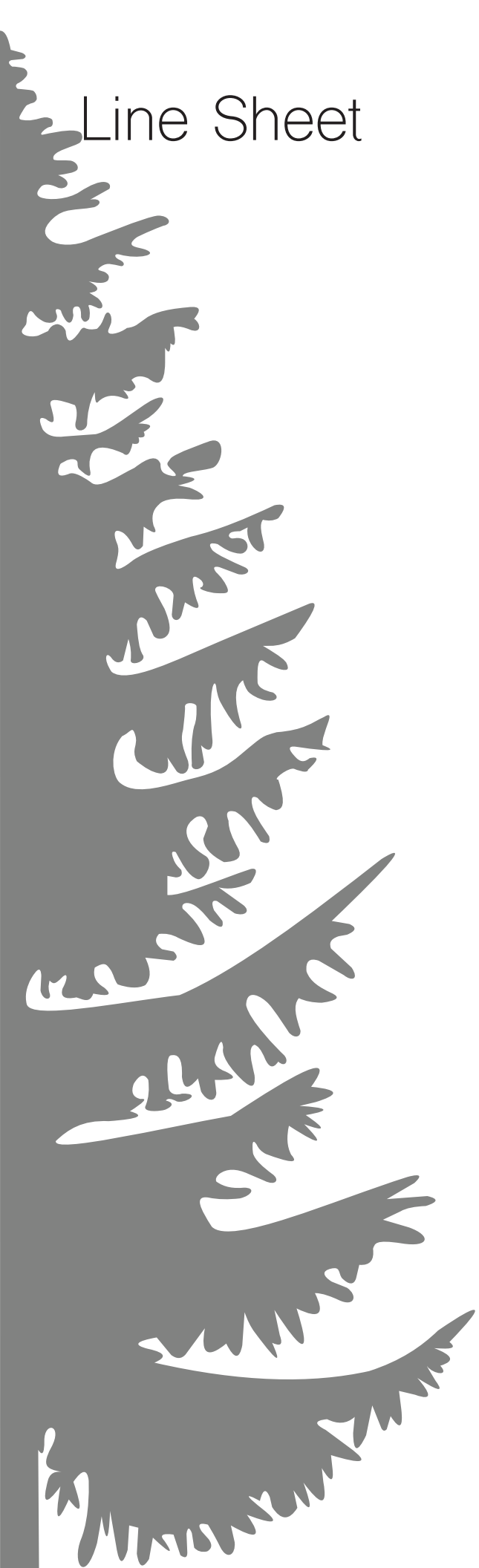
Graded Rules

POINT OF MEASURE	CODE	HOW TO MEASURE	CRITICAL	TYPE	TOLERANCE	0	2	4	6	8	10	12	14	16
Front Length from High Point Shoulder (HPS)	FRT LGT	Measure from HPS to bottom hem edge	false	Full	1/2 in	-1/4 in	-1/4 in	-1/4 in	45 in	1/4 in	1/4 in	1/4 in	1/4 in	1/4 in
Front Neck Drop	FRT NK	Create a parallel line along back neck, measure down to front neck edge	true	Full	1/8 in	-1/4 in	-1/4 in	-1/4 in	3 1/4 in	1/4 in	1/4 in	1/4 in	1/4 in	1/4 in
Back Neck Drop	BK NK	Create a parallel line along back neck, measure down to back neck edge	true	Full	1/8 in	-1/4 in	-1/4 in	-1/4 in	1 1/4 in	1/4 in	1/4 in	1/4 in	1/4 in	1/4 in
Back Length from HPS	eudbRF	From HPS to back hem.	false	Full	1/2 in	-1/4 in	-1/4 in	-1/4 in	47 in	1/4 in	1/4 in	1/4 in	1/4 in	1/4 in
Neck width	NK WDTN	Inside neck edge to edge	true	Full	1/8 in	-1/8 in	-1/8 in	-1/8 in	9 in	1/8 in	1/8 in	1/8 in	1/8 in	1/8 in
Across shoulder	ACR SHLDR	Shoulder seam to shoulder Seam	true	Full	1/4 in	-1/4 in	-1/4 in	-1/4 in	12 in	1/4 in	1/4 in	1/4 in	1/4 in	1/4 in
Shoulder Slope	SHLD SL	the angle of your shoulder from the base of the neck to the shoulder point	true	Half	1/8 in	0 in	0 in	0 in	1 1/4 in	0 in	0 in	0 in	0 in	0 in
Chest Circumference	CHT CIRC	Measure 1" below armhole - across edge to edge	true	Full	1/2 in	-1 in	-1 in	-1 in	28 in	1 in	1 in	1 1/4 in	1 1/4 in	1 1/4 in
Sweep Circumference	SWP CIRC	Measure along bottom hem edge to edge	true	Full	1/2 in	-1 in	-1 in	-1 in	36 in	1 in	1 in	1 in	1 in	1 in
Armhole Circumference Curved	ARH CIRC	Measure along armhole seam	false	Full	1/4 in	-1/4 in	-1/4 in	-1/4 in	20 in	1/4 in	1/4 in	1/4 in	1/4 in	1/4 in
Waist Circumference	WST CIRC	Measure along waist, edge to edge	true	Full	1/2 in	-1 in	-1 in	-1 in	27 in	1 in	1 in	1 in	1 in	1 in
Side Seam Length	j7mKAT	From bottom of waistband to top of thigh slit	false	Full	1/2 in	-1/4 in	-1/4 in	-1/4 in	16 1/2 in	1/4 in	1/4 in	1/4 in	1/4 in	1/4 in

Graded Measurements

POINT OF MEASURE	CODE	HOW TO MEASURE	CRITICAL	TYPE	TOLERANCE	0	2	4	6	8	10	12	14	16
Front Length from High Point Shoulder (HPS)	FRT LGT	Measure from HPS to bottom hem edge	false	Full	1/2 in	44 3/4 in	45 in	45 in	45 in	45 in	45 in	45 in	45 in	45 in
Front Neck Drop	FRT NK	Create a parallel line along back neck, measure down to front neck edge	true	Full	1/8 in	2 1/2 in	2 3/4 in	3 in	3 1/4 in	3 1/2 in	3 3/4 in	4 in	4 1/4 in	4 1/2 in
Back Neck Drop	BK NK	Create a parallel line along back neck, measure down to back neck edge	true	Full	1/8 in	1/2 in	3/4 in	1 in	1 1/4 in	1 1/2 in	1 3/4 in	2 in	2 1/4 in	2 1/2 in
Back Length from HPS	eudbRF	From HPS to back hem.	false	Full	1/2 in	46 1/4 in	46 1/2 in	46 3/4 in	47 in	47 1/4 in	47 1/2 in	47 3/4 in	48 in	48 1/4 in
Neck width	NK WDTN	Inside neck edge to edge	true	Full	1/8 in	8 5/8 in	8 3/4 in	8 7/8 in	9 in	9 1/8 in	9 1/4 in	9 3/8 in	9 1/2 in	9 5/8 in
Across shoulder	ACR SHLDR	Shoulder seam to shoulder Seam	true	Full	1/4 in	11 1/4 in	11 1/2 in	11 3/4 in	12 in	12 1/4 in	12 1/2 in	12 3/4 in	13 in	13 1/4 in
Shoulder Slope	SHLD SL	the angle of your shoulder from the base of the neck to the shoulder point	true	Half	1/8 in	1 1/4 in	1 1/4 in	1 1/4 in	1 1/4 in	1 1/4 in	1 1/4 in	1 1/4 in	1 1/4 in	1 1/4 in
Chest Circumference	CHT CIRC	Measure 1" below armhole - across edge to edge	true	Full	1/2 in	25 in	26 in	27 in	28 in	29 in	30 in	31 1/4 in	32 1/2 in	33 3/4 in
Sweep Circumference	SWP CIRC	Measure along bottom hem edge to edge	true	Full	1/2 in	35 in	36 in	36 in	36 in	36 in	36 in	36 in	36 in	36 in
Armhole Circumference Curved	ARH CIRC	Measure along armhole seam	false	Full	1/4 in	19 1/4 in	19 1/2 in	19 3/4 in	20 in	20 1/4 in	20 1/2 in	20 3/4 in	21 in	21 1/4 in
Waist Circumference	WST CIRC	Measure along waist, edge to edge	true	Full	1/2 in	26 in	27 in	27 in	27 in	27 in	27 in	27 in	27 in	27 in
Side Seam Length	j7mKAT	From bottom of waistband to top of thigh slit	false	Full	1/2 in	15 3/4 in	16 in	16 1/4 in	16 1/2 in	16 3/4 in	17 in	17 1/4 in	17 1/2 in	17 3/4 in

Line Sheet



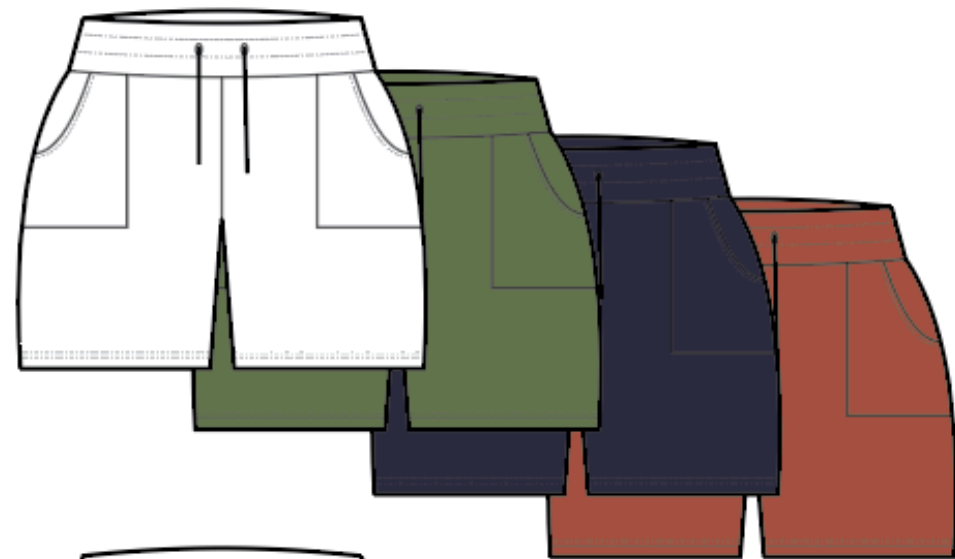
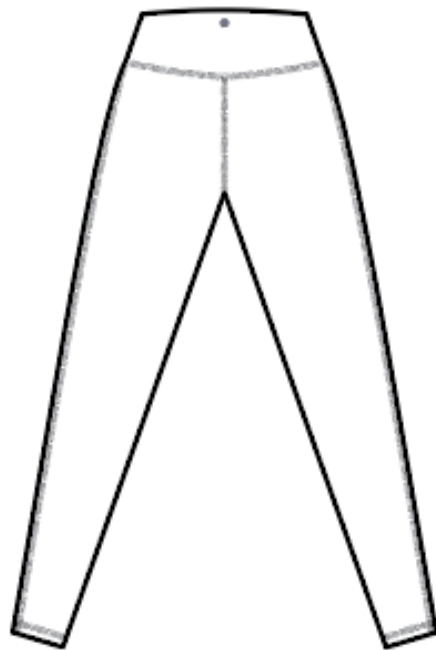
100% Recycled Nylon
XS-3XL
\$90



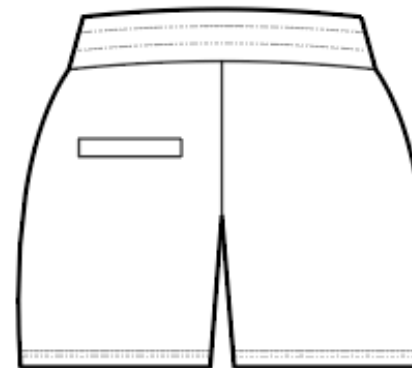
Line Sheet



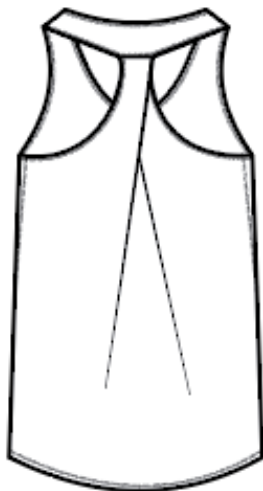
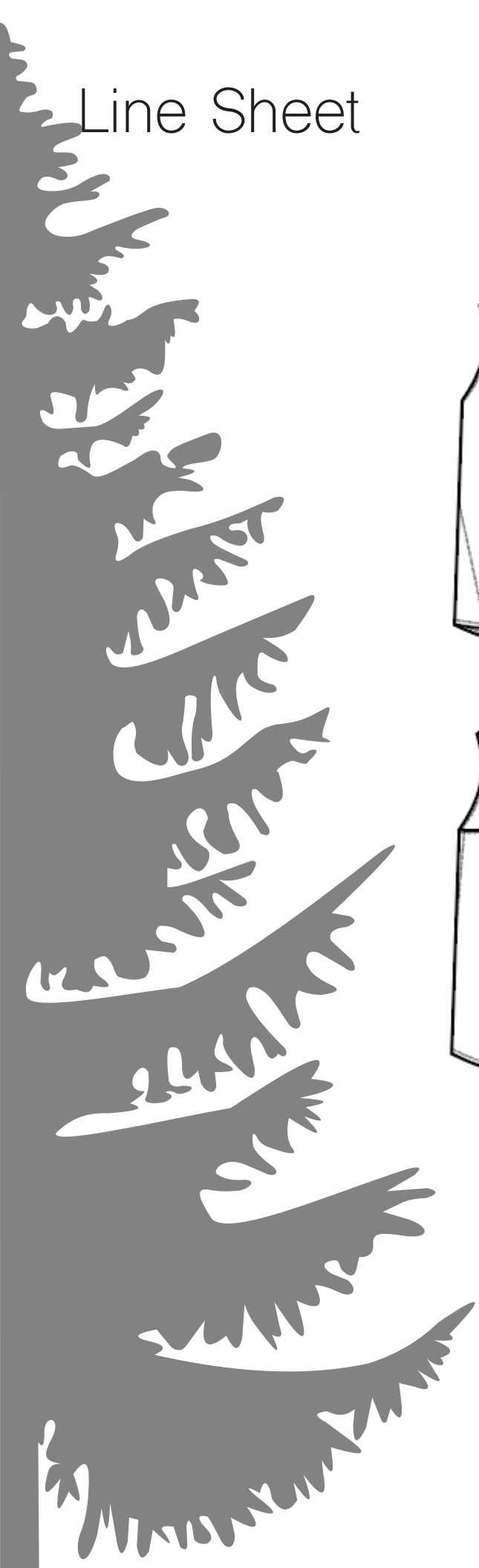
81% Recycled Nylon
19% Elastane
00-16
\$85



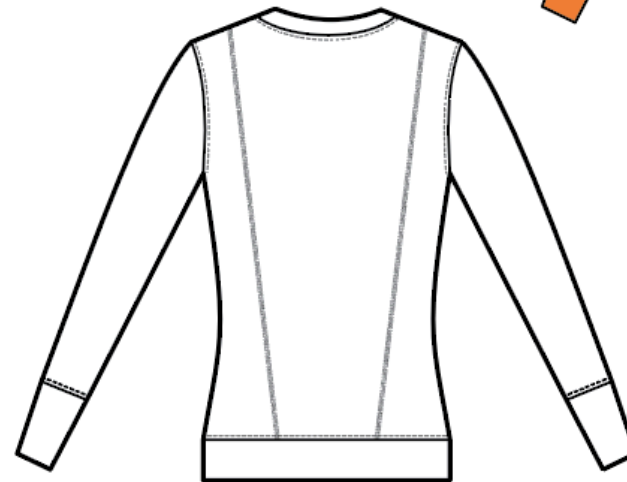
89% Recycled Polyester
11% Elastane
XXS-3XL
\$60



Line Sheet



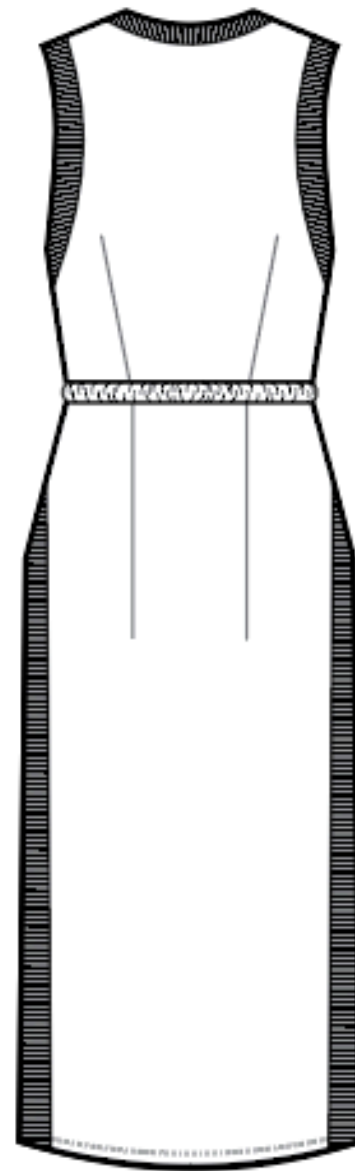
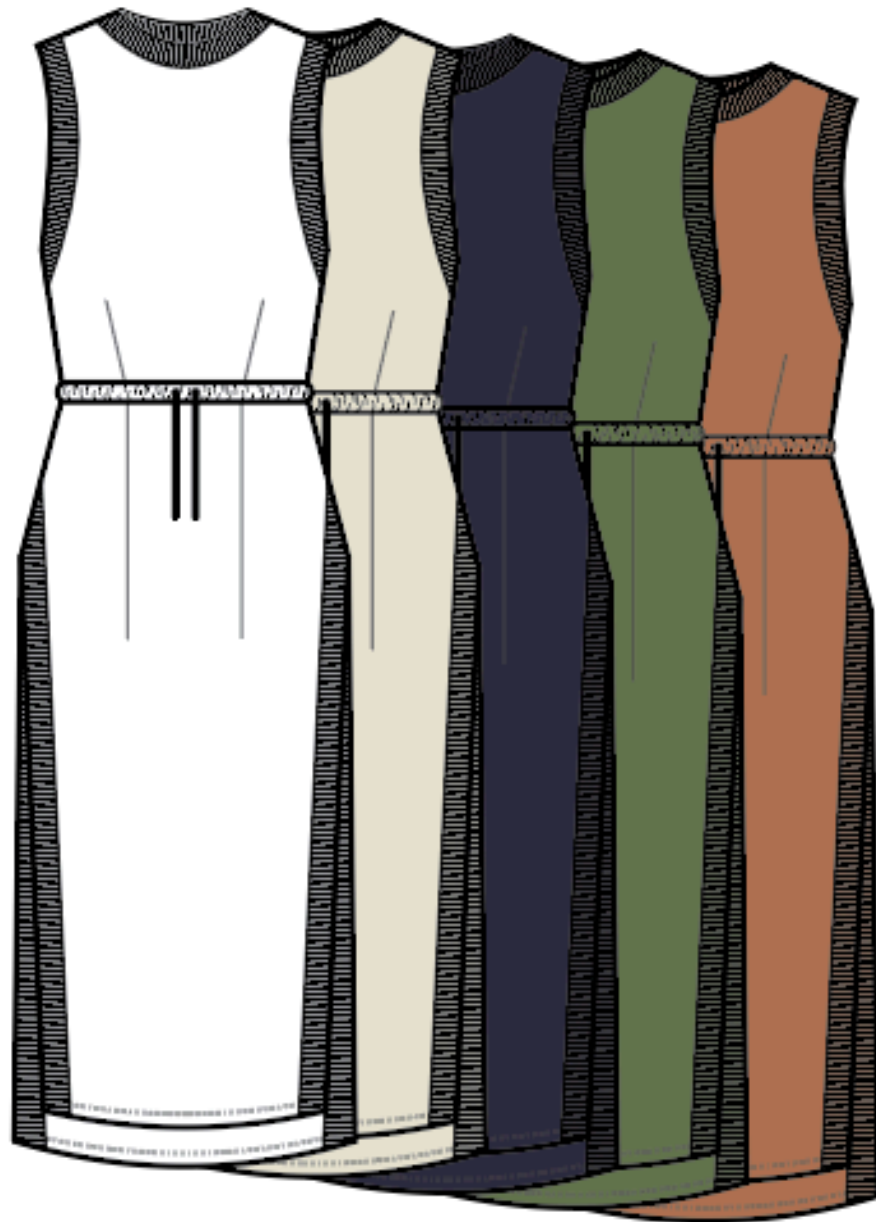
92% Recycled Polyester
8% Elastane
XXS-3XL
\$40



92% Recycled Polyester
8% Elastane
XXS-3XL
\$55



Line Sheet



80% Organic Cotton
20% Polyester
0-16
\$120



Clo3D Sweatshirt Tunic Renderings

