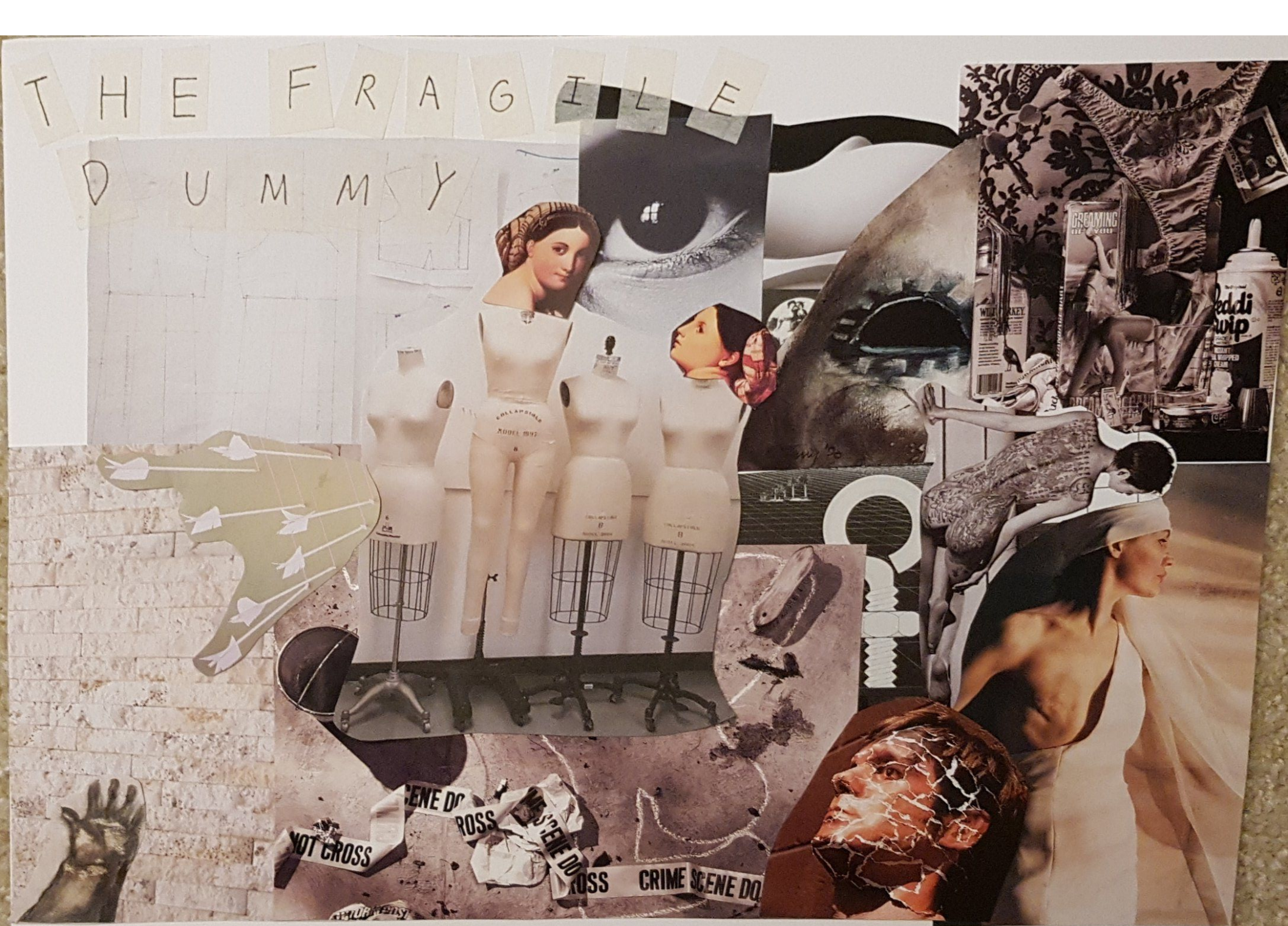


THE FRAGILE DUMMY

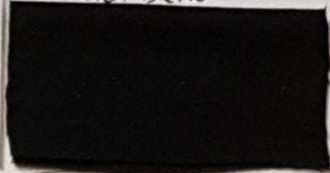
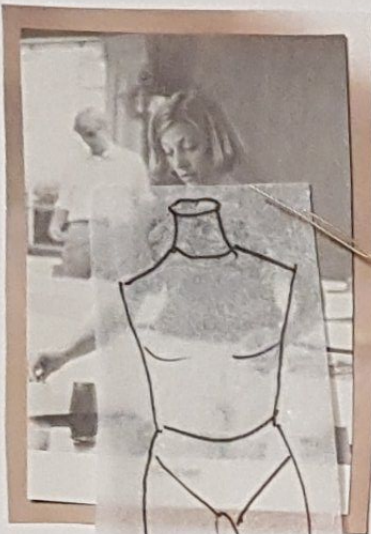


Karen Natania - Mood board -

linen
blend

Cotton
blend

Cotton
blend



Humans...

Just as fragile as a
mannequin.
Studying the mannequin
on top of human figures
to explore silhouette.



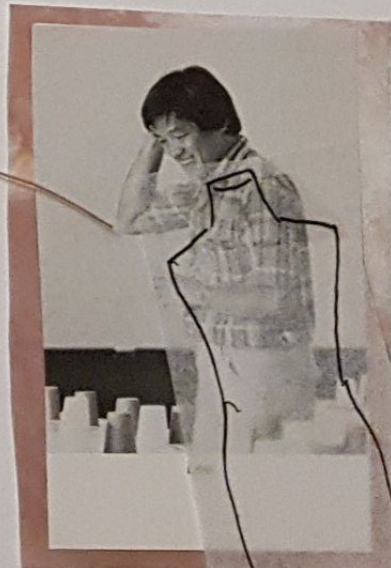
Cotton
blend



wool
blend

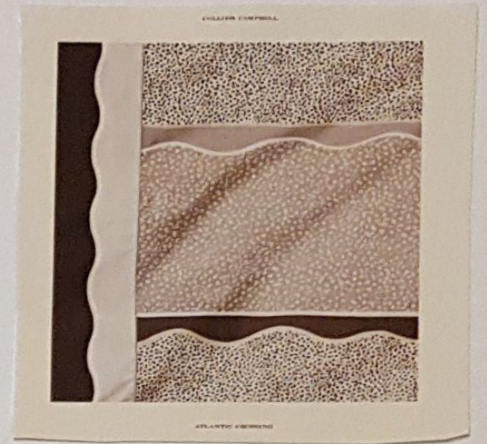
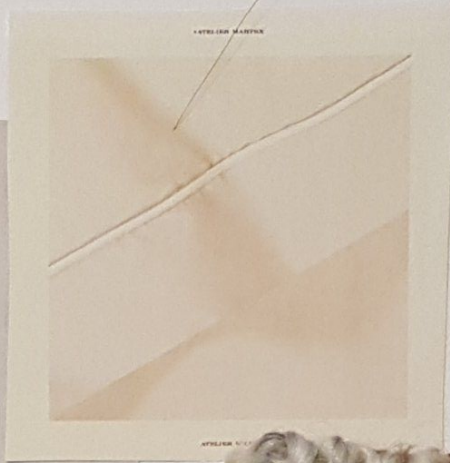
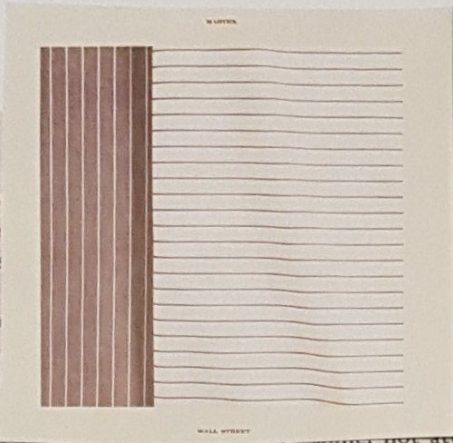


wool
blend



Karen Natana - C

For
If it is not done with passion, it
pas
of course, she said,
be
or m
ov



When... not attraction

I was able to see before us. She painted
or mania, but a calm watching of echoes.

Even when she thought, "I must have an amethyst
messages on trees, left clues on telephone poles.

It was her love of air finally realized.
in my hand, I cover long purple stones"

It frightened the rest of us sitting on
she knew that somewhere she

sawed off tree trunks watching. When
some hallway would show her

to sleep, she didn't
stones. She'd wanted someone

and using Velasquez silver everywhere,
about it, who wouldn't say a

even an... on...
except about the... of...

of scene admired... a place

and found herself... red...
or she thought she had to do...

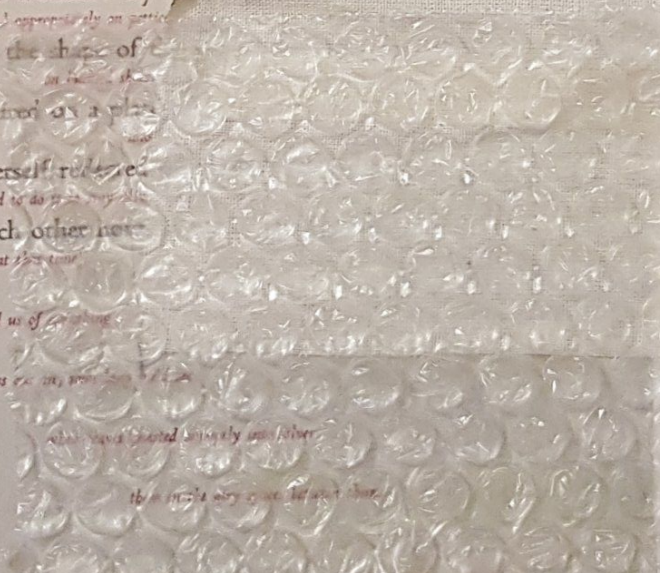
We know each other...
or perhaps (as I recall my dreams at...)

she thought to remind us of...

we'd miss... in, with...

she had painted... silver...

the... very... but...
two...
designed by Sheila Levant de Bretteville
printed by Susan Elizabeth King



The Fragile Dummy

...
Spring / Summer Season Collection.

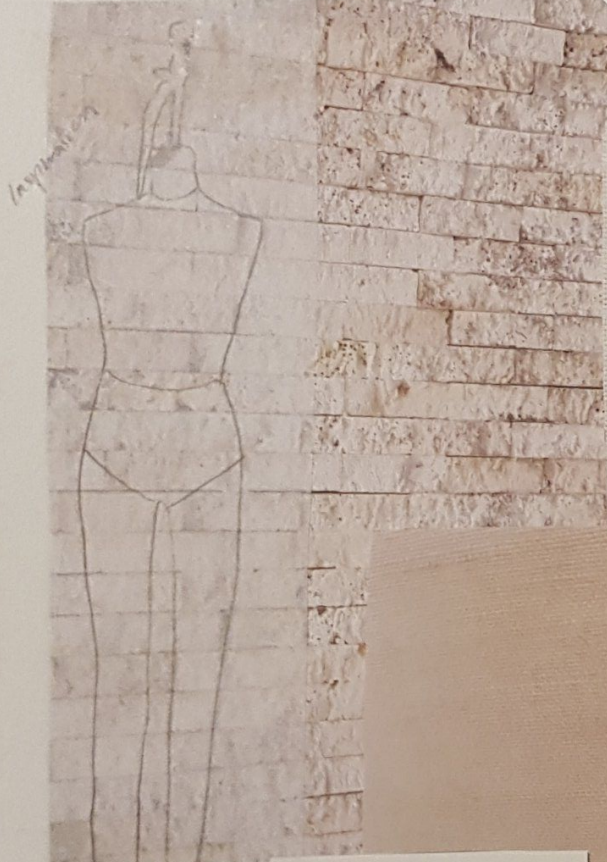
...

Using thin cotton blend, linen
fabrics similar to the one
coating the mannequin.
Using materials like thin
Summer wool, burnt linen
fabric, bubble wrap,
slippery cotton blend
to show the "fragile"
idea surrounding the
mannequin.

...
Having a neutral color
palette with greys,
white, beige, off-white,
brown, black fit the
idea of a mannequin's
fragile identity.

...

Tiles from AAU building



driving texture.



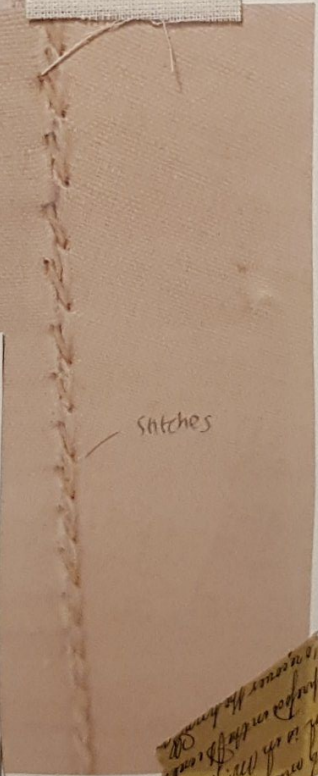
ANNA ELIZABETH AND JOSEPH C. BAYE
MARRIED SEPTEMBER 1, 1927

Bring the skirt
+ 5
inspiration
make it
more fit
slim fit

linen blend



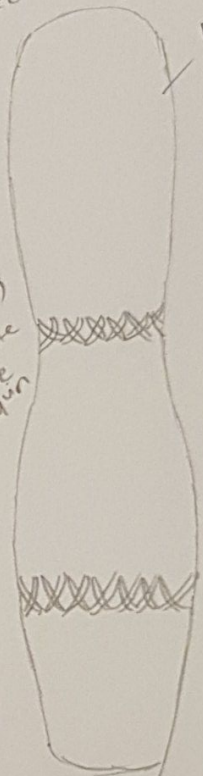
stitches



Sleeve Design

try find
material
to match

Following
the
silhouette
of the
mannequin

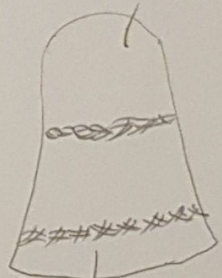


long

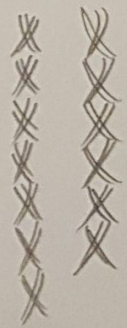


kind of
like a
bending pin
silhouette
inspiration

shorter
sleeve



bell shaped
silhouette
for sleeve



Cross-hatch
kind of
stitches

inspired by
the tiles



shape of texture
inside tiles

3D pop
up texture

stitches
on the
sleeve

stitch
across
the
crotch



along the
linen skirt

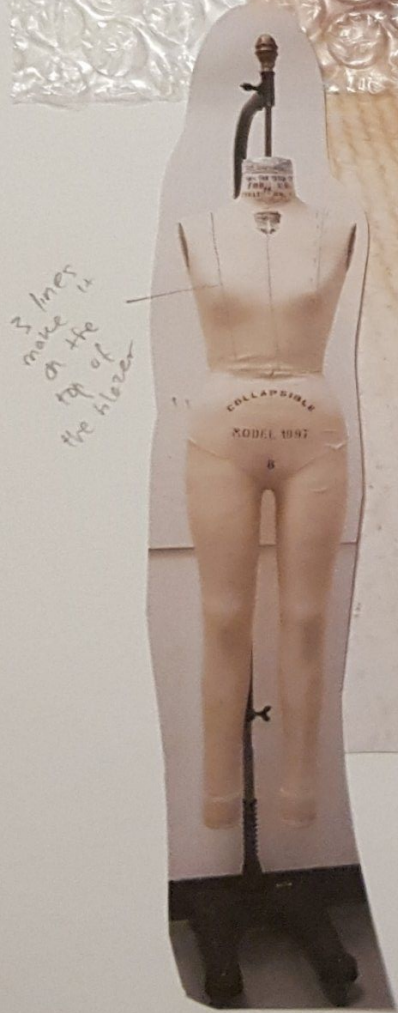
possible
color
swatches

Shape of
the
mannequin
(silhouette)

Bring the skirt
+ 5
inspiration
make it
more fit
slim fit



Handwritten note: "The 'Shirley' and 'The Shirley'..."



3 lines make up the top of the bodice

texture

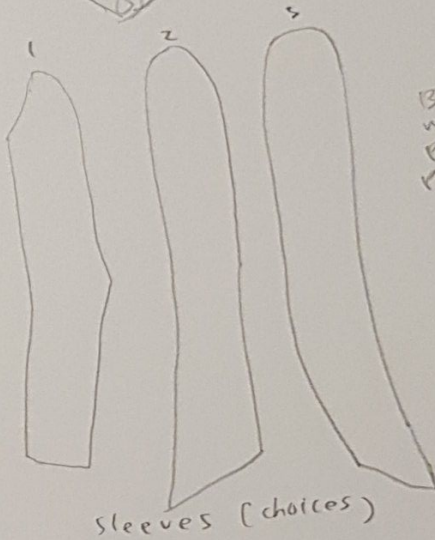
Bubble fabric

Possible color swatches



Bubble wrap pocket

Fabric layering over it

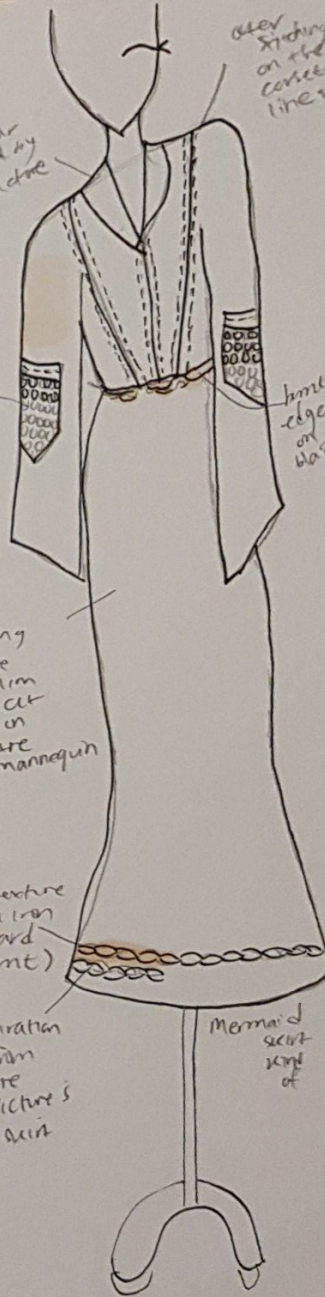


Sleeves (choices)

Bubble wrap pockets placement on elbow

Collar inspired by the picture

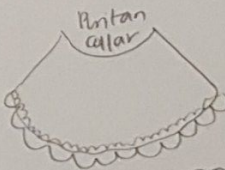
over stitching on the corner lines



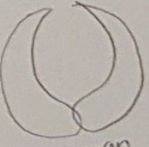
Using the slim cut on the mannequin

texture on iron board (hmt)

Mermaid skirt style of



Peter Pan collar



Peter Pan collar



hmt scrunched up with hmt sides wool (green on hmt board) ribbon

Inspiration from the picture's skirt

Design 2

Possible color palette

W601

W602

W603

W604

W605

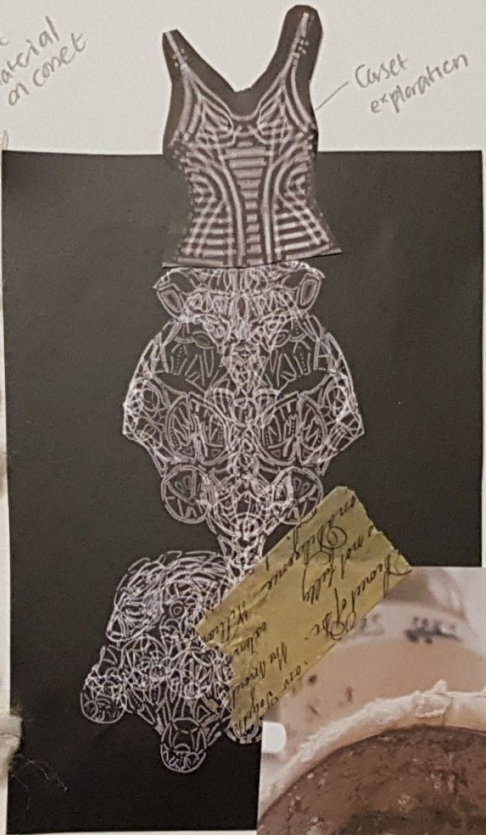
W606

W607

W608

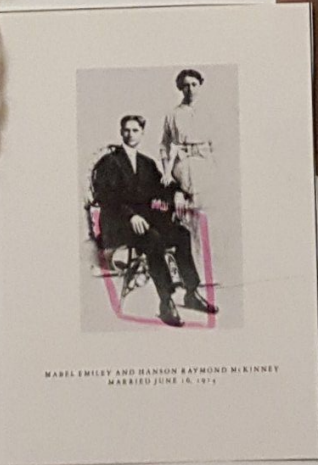


knit material on corset



Corset explanation

scratch marks (?)



Using menswear pants as inspiration for the mannequin shape

Corset explanation

Sweetheart neckline inspiration

exploring shapes



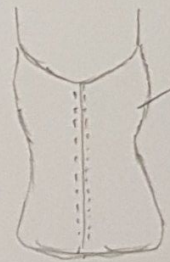
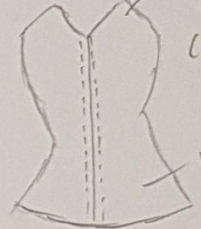
pushed up corset



"fragile" sharp to center it.

sharp pointy top part (similar to shoulder on mannequin)

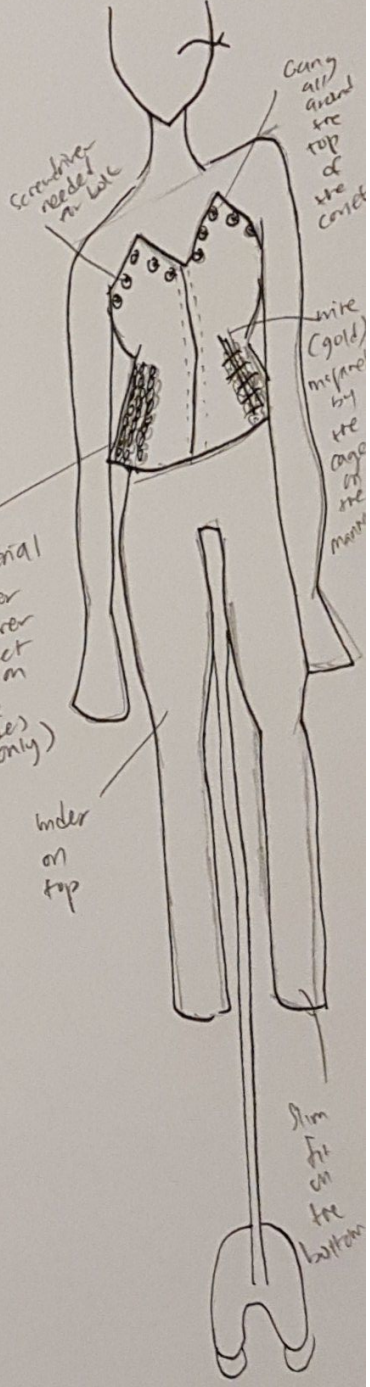
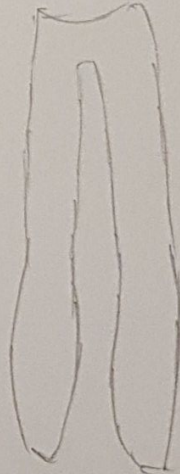
kind of like a keelum top



looser corset with straps



Inspired by the legs on the mannequin



screwdriver needed in hole

Can't all around the top of the corset

knit (gold) mixed by the cage on the mannequin

knit material (center all over corset or on the sides only)

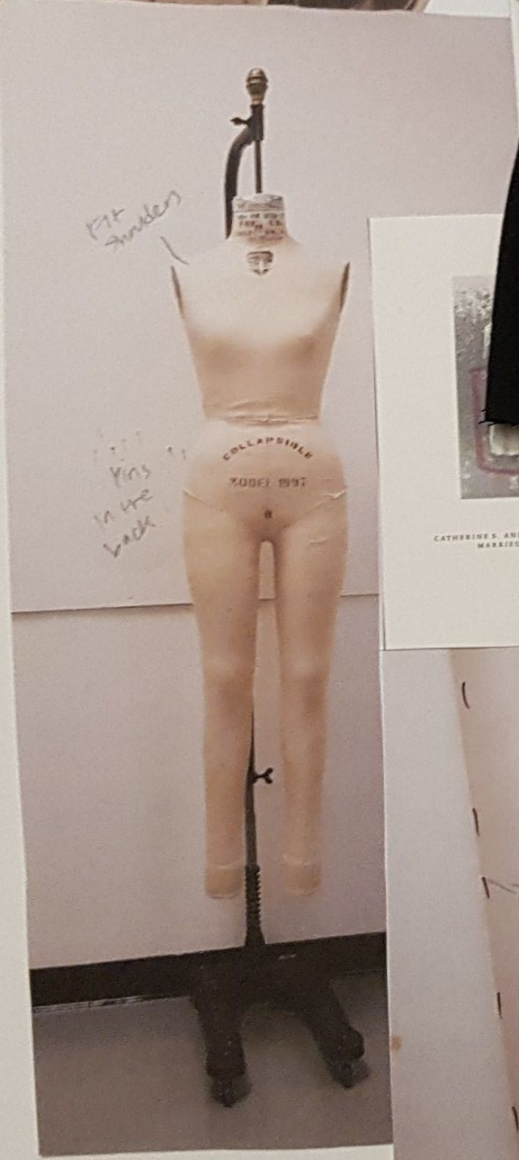
under on top

slim fit on the bottom

screwdriver needed (cut?)

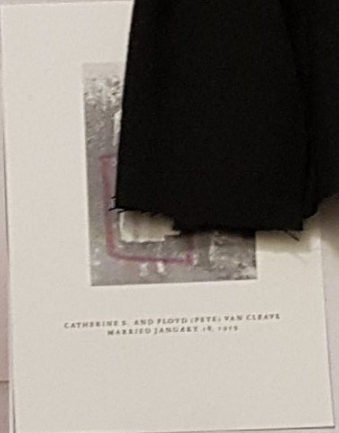
Design 3

copy of the drawing
of the skirt
with the
pleats in the
back

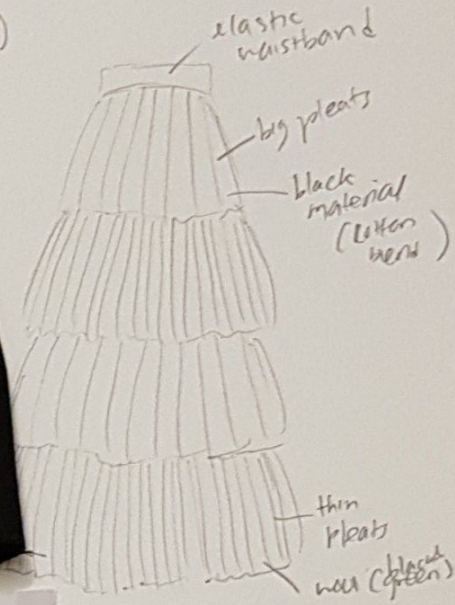


fit
shoulders

pins
in the
back



pleating
sample fabric is
a bit too
thin &
slippery



elastic
waistband

big pleats

black
material
(cotton
blend)

thin
pleats

black
waist
(cotton)



5 "black"
Possible color
swatches



Corset
top

find a
way to
put
pins



big
pleats

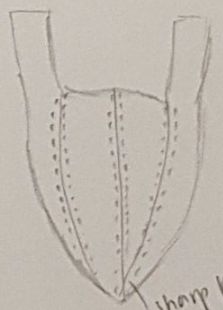
elastic
waistband

thin
pleats

heme
edges

slip
the
top
band
fabric
(2cm)

pins
of plastic
needle
can be
used
on
corset/
skirt -
the top
plastic
part
sewn
into



sharp point
off-white/yellowish
cotton
band

kind of
similar
to the
exact
illustration
of the
mannequin

lined
skirt

pleats

Design 4