

Black

Black is the absorption of all color and the absence of light.

The color black relates to the hidden, the secretive and the unknown, and as a result it creates an air of mystery. It keeps things bottled up inside, hidden from the world. This color gives protection from external emotional stress. It creates a barrier between itself and the outside world, providing comfort ~~and~~ protecting its emotions and feelings, and hiding its vulnerabilities, insecurities and lack of self-confidence.

GARIS GADIS BIASA

Karen Natania

KN #01 - OUTFIT 1 - TALI HITAM

Playful straps and ruffles that compliment the figure and elongates the torso. It gives off elegance with a dark essence that really makes the look pop.



KN #02 - OUTFIT 2 - KETEBALAN HATI

Unique flare pants paired with a matching tube top layered with a fully three dimensional detailed ruffle vest that gives the right amount of volume to the model.



KN #03 - OUTFIT 3 - HATI TRANSPARAN SEBUAH GADIS

The sheer skirt is part of the sheer trend that involves Y2K styles. It is paired with a unique top that is layered with floral flaps to give some coverage to the matching skirt. It gives a mix of the 90s and trends right now.



KN #04 - OUTFIT 4 - GADIS YANG TIDAK BIASA

A unique cutout asymmetrical top that cinches the waist and gives the right amount of volume to the hips compliments the asymmetrical half pleat half print skirt to give it the right silhouette.



STYLE #: F21 -KN001	DESCRIPTION: High waisted asymmetrical dual print skirt
GROUP: Women's Fall 1 Delivery	DATE: 23 November 2021

FRONT VIEW:



Fabric Location	Fabric/Yarn Content	Fabric Construction	Weight
Left front and back	Pleated sheer tulle 100% polyester	machine made netting, then pleated finely	150 gm
Right front and back and waistband	Silk duchess satin 100% silk	yarn dyed, warp faced weaving technique	40 m/m
Asymmetrical skirt with one side that ends above the knees and one side that ends at the ankle. High waistband joined to the skirt pieces with superimposed seam, overedge chain stitch. Hem is unfinished.			

STYLE #: F21 -KN001	DESCRIPTION: High waisted asymmetrical dual print skirt
GROUP: Women's Fall 1 Delivery	DATE: 23 November 2021

BACK VIEW:



Fabric Location	Fabric/Yarn Content	Fabric Construction	Weight
Left front and back	Pleated sheer tulle 100% polyester	machine made netting, then pleated finely	150 gm
Right front and back and waistband	Silk duchess satin 100% silk	yarn dyed, warp faced weaving technique	40 m/m
Asymmetrical skirt with one side that ends above the knees and one side that ends at the ankle. High waistband joined to the skirt pieces with superimposed seam, overedge chain stitch. Hem is unfinished.			

STYLE #: F21 -KN001	DESCRIPTION: High waisted asymmetrical dual print skirt
GROUP: Women's Fall 1 Delivery	DATE: 23 November 2021

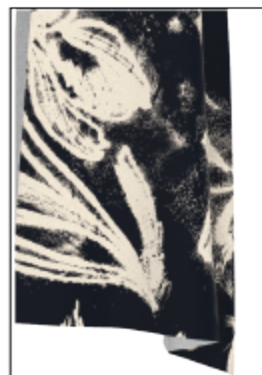
GARMENT DETAILS:



Elastic thread used on the waistband to give the satin duchess stretch, sewn onto the skirt bodice with superimposed seam and over-edge chain stitch. On top of waistband fold 3/4" and do a blind stitch. For the side seam, superimposed seam open faced with overedge chain stitch. Joining the left and right bodices with superimposed seam single row over edge & chain stitch.



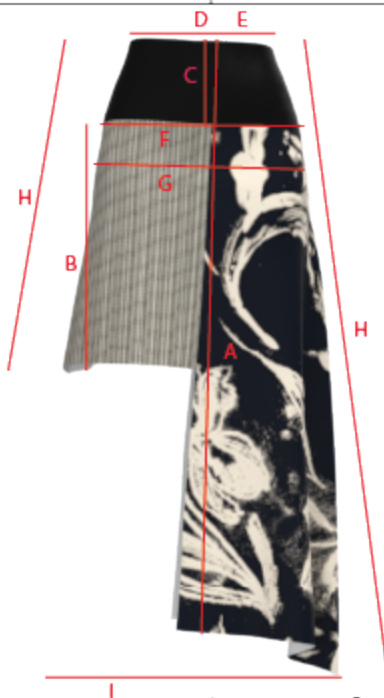
Leave hem unfinished, let the floral print side fall freely, not as stiff as the pleated side of the skirt.



Fabric Location	Fabric/Yarn Content	Fabric Construction	Weight
Left front and back	Pleated sheer tulle 100% polyester	machine made netting, then pleated finely	150 gm
Right front and back and waistband	Silk duchess satin 100% silk	yarn dyed, warp faced weaving technique	40 m/m

Asymmetrical skirt with one side that ends above the knees and one side that ends at the ankle. High waistband joined to the skirt pieces with superimposed seam, overedge chain stitch. Hem is unfinished.

STYLE #: F21 -KN001	DESCRIPTION: High waisted asymmetrical dual print skirt
GROUP: Women's Fall 1 Delivery	DATE: 23 November 2021



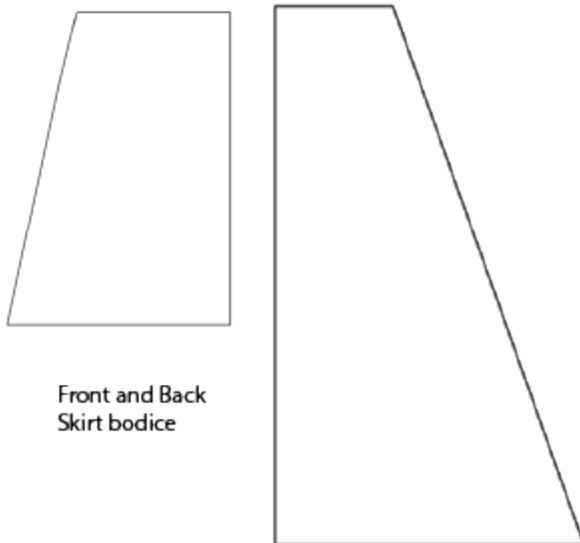
	Measurement Point	Notes	Small	Medium	Large	X Large
A	Center front length to hem		19"			
B	Length of left skirt bodice		9"			
C	Waistband height		4"			
D	Waistband circumference [extended]		16"			
E	Waistband circumference [relaxed]		14"			
F	High hip circumference	4" below natural waist	20"			
G	Low hip circumference	7" below natural waist	23"			
H	Sideseam waist to hem		9" & 21"			
I	Bottom sweep		25"			
J						

STYLE #: F21 -KN001	DESCRIPTION: High waisted asymmetrical dual print skirt
GROUP: Women's Fall 1 Delivery	DATE: 23 November 2021

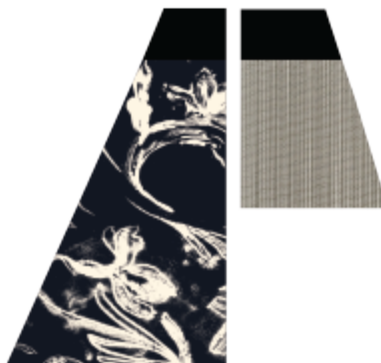
FLAT PATTERNS PAGE



Front and Back waistband



Front and Back
Skirt bodice



Fabric Location	Fabric/Yarn Content	Fabric Construction	Weight
Left front and back	Pleated sheer tulle 100% polyester	machine made netting, then pleated finely	150 gm
Right front and back and waistband	Silk duchess satin 100% silk	yarn dyed, warp faced weaving technique	40 m/m

Asymmetrical skirt with one side that ends above the knees and one side that ends at the ankle. High waistband joined to the skirt pieces with superimposed seam, overedge chain stitch. Hem is unfinished.

STYLE #: F21 -KN001	DESCRIPTION: High waisted asymmetrical dual print skirt
GROUP: Women's Fall 1 Delivery	DATE: 23 November 2021

3D PAGE:



Fabric Location	Fabric/Yarn Content	Fabric Construction	Weight
Left front and back	Pleated sheer tulle 100% polyester	machine made netting, then pleated finely	150 gm
Right front and back and waistband	Silk duchess satin 100% silk	yarn dyed, warp faced weaving technique	40 m/m
Asymmetrical skirt with one side that ends above the knees and one side that ends at the ankle. High waistband joined to the skirt pieces with superimposed seam, overedge chain stitch. Hem is unfinished.			